

**The Institute of
Statistical Mathematics**

ACTIVITY REPORT

2005–2006

Tokyo, Japan

The Institute of Statistical Mathematics

Activity Report
2005 — 2006



Tokyo, Japan

October 2007

Center for Engineering and Technical Support

The Institute of Statistical Mathematics

Research Organization of Information and Systems

Inter-University Research Institute Corporation

Contents

Foreword	v
1. Organization	1
2. Departments, Centers, and Research Staff	3
3. Research Collaboration	17
4. International Research Exchange	19
Foreign Visitors	21
Colloquia by Foreign Visitors	25
5. Publications	29
Aims and Scope of AISM	29
Technical Reports	31
6. Published Papers and Books	41
7. Tutorial Programs and Consultation	73
8. Software Products	75
Supplement	79
Introduction to the Department of Statistical Science, School of Multidisciplinary Sciences, The Graduate University for Advanced Studies	

Foreword

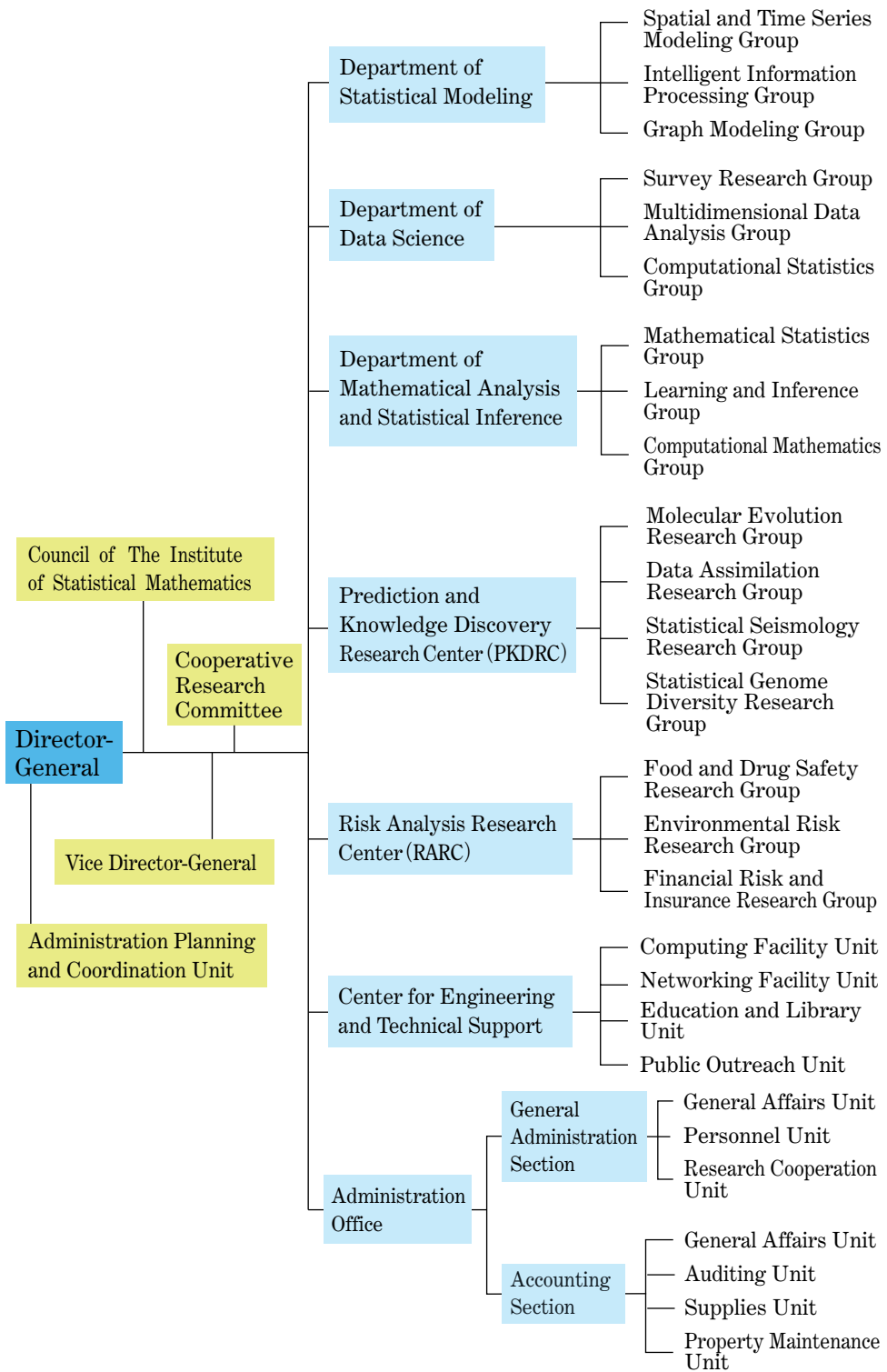
This annual report is intended to provide general information of the Institute of Statistical Mathematics (ISM) and the research activities of the institute in the past two years. During this period, ISM restructured its research organization to adapt to the changes in statistical science.

ISM was founded in 1944 as a national institute for statistical science and was reorganized as an Inter-University Research Institute in 1985. In 2004, ISM became an independent agency under the umbrella of Research Organization of Information and Systems. In April 2005, ISM restructured its research organization. In order to embody our basic principle of establishing new statistical methods through challenges to important scientific problems and social tasks, in designing the new organization ISM adopted a dual structure consisting of a basic research section and a strategic research section.

In the basic research section, we established three departments of Statistical Modeling, Data Science, and Mathematical Analysis and Statistical Inference. In the strategic research section, two research centers were established. The Prediction and Knowledge Discovery Research Center aims to develop methods and applications for prediction and knowledge discovery based on a huge data set for contribution in the coming post-IT era and knowledge society. In contrast, Risk Analysis Research Center aims to develop scientific methods to deal with increased uncertainty and risks caused by the globalization of society.

We believe that the role of statistical science will become more important with the rise of information and risk society. We hope for your understanding and support to our activities.

Genshiro Kitagawa
Director-General



Organization

Since its foundation as the one and only national institute for statistical science in Japan, the Institute of Statistical Mathematics has continued to exert a prominent influence on the study and research of statistical science. The ever-increasing needs for statistical methods and ideas in various fields of science and technology led the Institute to reorganize itself in 1985 as an inter-university research institute, which puts a major emphasis on research collaboration with all disciplines of science.

In April 2004, the Institute begun a new chapter as a member of the Research Organization of Information and Systems, Inter-University Research Institute Corporation, together with three other institutes, National Institute of Informatics, National Institute of Genetics and National Institute of Polar Research.

At present, the Institute consists of three departments, three centers, an administration office, a council, and a committee. All Institute activity is guided by the leadership of the Director-General and three Vice Director-Generals. The Council of the Institute of Statistical Mathematics implements any necessary recommendations. The Cooperative Research Committee organizes and facilitates collaborative research projects developed between scholars at the Institute and scientists in other academic agencies.

Three research departments, the Department of Statistical Modeling, the Department of Data Science, and the Department of Mathematical Analysis and Statistical Inference, form the active core of the Institute with its 48 academic staff, carrying out research on either statistical theory or its application to other fields of science and industry. The Department of Statistical Modeling and its three groups study statistical modeling aspects on various fields. In the three groups of the Department of Data Science, efforts are concentrated on data collection and handling. The three group of the Department of Mathematical Analysis and Statistical Inference are specifically concerned with fundamental aspects of statistics.

The two strategic research centers, Prediction and Knowledge Discovery

Research Center and Risk Analysis Research Center were established in 2003 and 2005, respectively, and performed project research on specific topics. Prediction and Knowledge Discovery Research Center studies molecular evolution, data assimilation, statistical seismology and statistical genome diversity. Risk Analysis Research Center focuses on the study of food and drug safety, environmental risk and financial risk and insurance.

More detailed descriptions of the objectives of each department and center are presented in the next chapter. The information covers research subjects and the interests of staff, which range from the physical sciences and life sciences to the social and cultural sciences.

The Center for Engineering and Technical Support was established in 2006 to help the activities of the Japanese statistical science community by providing adequate computational and informational resources. This center has 11 technical staff that work on special jobs including maintenance of computer systems, editing journals and bibliographical services. The Institute has two super-computer systems and a library of books and journals, not only in pure statistics, but also in fields of specific interest to researchers (e.g., physics, genetics and social sciences). Lastly, there is also a division of 16 officials who manage general affairs.

The Institute devotes itself to educating young statisticians as well. As a constituent of the Graduate University for Advanced Studies (Department of Statistical Science, School of Multidisciplinary Sciences), the Institute offers graduate programs leading to a Ph.D. degree. (See Supplement on page 79.)

(The number of staff mentioned above refer to the full strength on April 1, 2007.)



Departments, Centers and Research Staff

(As of August 1, 2007)

Department of Statistical Modeling

The Department of Statistical Modeling conducts research on the modeling of causally, temporally and/or spatially interrelated complex phenomena, including intelligent information processing systems. It also conducts on model-based statistical inference methodologies.

Spatial and Time Series Modeling Group

The Spatial and Time Series Modeling Group works on modeling and inference for the statistical analysis of time series, spatial and space-time data, and their applications to prediction and control.

— *Staff* —

Tohru OZAKI, Prof.

Masaharu TANEMURA, Prof. (Vice Director-General)

Yosihiko OGATA, Prof.

Tomoyuki HIGUCHI, Prof. (Vice Director-General)

Yoshinori KAWASAKI, Assoc. Prof.

Kenichiro SHIMATANI, Assist. Prof.

Genta UENO, Assist. Prof.

Ryo YOSHIDA, Assist. Prof.

Jiancang ZHUANG, Assist. Prof.

Subjects

- Methods for prediction and knowledge discovery based on Bayesian model
- Hidden variable modeling with smoothing prior
- Statistical analysis and modeling of stochastic point process
- Study of spatial phenomena such as statistical analysis of form
- Point process model and its applications to biosciences
- Genome informatics with graphical modeling

- Community dynamics and diversity analysis based on long-term woods monitoring data
- Improve of nonlinear prediction and control of power plant
- Non-invasive brain activity measurement data and dynamical inversion problem solution
- Construction of large scale Bayesian models
- Estimation and application of regularized non-linear models
- Model integration by particle filter
- Modeling and application of point location and/or spatial structure
- Application of gene point process model to plant community
- Point process modeling of market data and its application
- Non-linear prediction and optimum control of financial system
- Development of data assimilation system in Earth science
- Statistical seismology
- Bio-logging and animal behavior modeling
- Reproduction and group sustain mechanism of perennial herb

Intelligent Information Processing Group

The Intelligent Information Processing Group works on concepts and methods for the extraction, processing and transformation of information in intelligent systems, motivated by an active interest in practical problems in engineering and science.

— Staff —

Makio ISHIGURO, Director, Prof.

Toshio IRINO, Visiting Prof.

Yumi TAKIZAWA, Assoc. Prof.

Kenji FUKUMIZU, Assoc. Prof.

Yukito IBA, Assoc. Prof.

Tomoko MATSUI, Assoc. Prof.

Hiroshi SOMEYA, Assist. Prof.

Subjects

- Model evaluation by information criteria
- Conversation between macro and micro, or non-linear modeling
- Application of sampling methods for complicated distribution
- Statistical analysis of data with geometric structure
- Study of information theory and digital signal processing
- Study of digital signal processing for information communication
- Study of perception mechanism of multimodal information
- Design and applications of evolutionary computation

- Study of ways to formulate subjective information
- Development of Monte Carlo algorithms
- Multivariate analysis of simulation data
- Statistical inference on singular models
- Inductive learning machine
- Audio information processing
- Pattern recognition
- Statistical analysis by positive definite kernel

Graph Modeling Group

The Graph Modeling Group works on analyses of the data generated by systems with a graph structure and on the modeling required in order to reconstruct the original system.

— *Staff* —

Masami HASEGAWA, Prof. (-2007.3.31)

Jun ADACHI, Assoc. Prof.

Ying CAO, Assist. Prof.

Subjects

- Estimation of molecular dendrogram
- Modeling of molecular evolution
- Comparison of genome structure
- Theoretical study of life information science

Department of Data Science

The Department of Data Science aims to develop research methods for surveys, multidimensional data analyses, and computational statistics.

Survey Research Group

The Survey Research Group focuses on research related to statistical data collection and data analyses.

— *Staff* —

Takashi NAKAMURA, Director, Prof.

Ryozo YOSHINO, Prof.

Yoshiyuki SAKAMOTO, Prof. (-2007.3.31)

Tadahiko MAEDA, Assoc. Prof. Takahiro TSUCHIYA, Assoc. Prof.
Hajime IHARA, Assoc. Prof. (-2007.6.30)
Wataru MATSUMOTO, Assist. Prof.

Subjects

- Social research methods and data analysis
- Cohort analysis of repeated social research data
- Data science for Behaviormetric study of civilizations
- Theory and applications of latent variable models
- Research on nonsampling errors in surveys
- Analyses of cancer incidence and mortality
- Statistical research on the Japanese national character
- Sampling theory and its applications
- Methodology of cross-national comparative survey
- Cognitive science of social dynamics on individuals and group
- Comparative study of survey modes
- Statistical survey research on organizations

Multidimensional Data Analysis Group

The Multidimensional Data Analysis Group studies methods for analyzing phenomena grasped on multidimensional space and ways for collecting multidimensional data.

— *Staff* —

Yasumasa BABA, Prof. Toshiharu FUJITA, Prof.
Takemi YANAGIMOTO, Prof. (-2007.3.31)
Masahiro MIZUTA, Visiting Prof. Nobuhisa KASHIWAGI, Assoc. Prof.
Satoshi YAMASHITA, Assoc. Prof. Sumie UEDA, Assist. Prof.
Toshio OHNISHI, Assist. Prof. Toshihiko KAWAMURA, Assist. Prof.

Subjects

- Estimation of a high-dimensional parameter and its theory
- Bayesian analysis of the generalized linear model
- Analysis of structure of time dependent multidimensional system
- Development of large-scale databases for benefit-risk evaluation of pharmaceutical drugs
- Ad hoc pharmacoepidemiological observational study on postmarketing drugs

- A large-scale cohort study on women's health in Japan
- A controlled trial for suicide prevention in Japan
- Linkage and effective use of micro-data
- Evaluation methodology for financial statistic models
- Construction of database for 'Nuzi personal names' and reconstruction of the family trees
- Nonparametric data analysis
- Bayesian methods for analyzing multidimensional data
- Analysis of environmental data
- Receptor modeling
- Valuation of market risk and credit risk
- Behavior model and demand forecasting
- Statistical analysis in clinical trials of pharmaceutical drugs
- Statistical quality control and Taguchi's method

Computational Statistics Group

The Computational Statistics Group studies sophisticated uses of computers in statistical methodology such as computer-intensive data analyses, computational scientific methods and statistical systems.

— Staff —

Yoshiyasu TAMURA, Prof. (Vice Director-General)

Junji NAKANO, Prof. Makoto TAIJI, Visiting Prof.

Yoshinari FUKUI, Visiting Prof. Makoto MATSUMOTO, Visiting Prof.

Michiko WATANABE, Visiting Prof.

Naomasa MARUYAMA, Assoc. Prof.

Koji KANEFUJI, Assoc. Prof. Seisho SATO, Assoc. Prof.

Tohru ONODERA, Visiting Assoc. Prof.

Takeshi KOSHIBA, Visiting Assoc. Prof.

Nobuo SHIMIZU, Assist. Prof.

Subjects

- Discretization method of nonlinear stochastic differential equations and its applications
- Development of Physical random number generator
- Statistical data visualization
- Parallel computation of Monte Carlo filter
- Methodology for collecting and publishing information relating to

statistical science

- On development of courseware of statistics
- Information extraction from large scale economic time series
- Parallel and distributed processing in statistical system
- Statistical data mining
- Data description language “D and D”
- Application of Internet survey
- Functional principal points on functional data analysis
- Reliability theory based on life-span models
- Statistical system for analyzing geographic information
- Symbolic data analysis

Department of Mathematical Analysis and Statistical Inference

The Department of Mathematical Analysis and Statistical Inference carries out research into general statistical theory, statistical learning theory, the theory of optimization, and the practice of statistics in science.

Mathematical Statistics Group

The Mathematical Statistics Group is concerned with aspects of statistical theory and probability theory that has statistical applications.

— *Staff* —

Katuomi HIRANO, Director, Prof.

Satoshi KURIKI, Prof.

Tadashi MATSUNAWA, Prof. (-2006.3.31)

Takaaki SHIMURA, Assist. Prof. Yoichi NISHIYAMA, Assist. Prof.

Kei KOBAYASHI, Assist. Prof.

Subjects

- Statistical inference and statistical decisions
- Analysis of multivariate data and contingency tables
- Integral-geometric approach to random fields theory
- Study on controlling the rate of false discoveries
- Statistical inference for stochastic processes
- Infinite-dimensional statistical models
- Statistical inference based on graphical models

- Probability distributions
- Statistical theory of reliability
- Additive processes
- Heavy-tailed distributions
- Limit theorems for stochastic processes
- Statistical inference in genetic linkage analysis
- Statistical learning theory
- Model selection and prediction theory

Learning and Inference Group

The Learning and Inference Group develops statistical methodologies that enable researchers to learn from data sets and to properly extract information through appropriate inference procedures.

— *Staff* —

Shinto EGUCHI, Prof.

Kunio SHIMIZU, Visiting Prof.

Mihoko MINAMI, Assoc. Prof.

Shiro IKEDA, Assoc. Prof.

Hironori FUJISAWA, Assoc. Prof.

Tadayoshi FUSHIKI, Assist. Prof.

Masayuki HENMI, Assist. Prof.

Subjects

- Statistical learning theory
- Information geometry
- Robust inference
- Statistical inference for observational studies
- Theory of multivariate distributions and its application
- Bioinformatics
- Statistical prediction
- Stochastic inference
- Genome statistics
- Biostatistics

Computational Mathematics Group

The Computational Mathematics Group studies computational algorithms together with mathematical methodologies used for statistical modeling in the sciences.

— *Staff* —

Takashi TSUCHIYA, Prof. Takashi OKASAKI, Prof. (-2006.3.31)
Yoshiaki ITOH, Prof. (-2007.3.31) Satoshi ITO, Assoc. Prof.
Yoshihiko MIYASATO, Assoc. Prof

Subjects

- Algorithms for computational inference
- Optimization modeling in computational inference
- Systems design under uncertainty
- Nonlinear H_∞ control based on inverse optimality
- Adaptive gain-scheduled control
- Mathematics and computational complexity analysis of convex programming
- Theory and computational methods of optimization
- Iterative learning control
- Computational algorithms for state-space modeling

Prediction and Knowledge Discovery Research Center

The Prediction and Knowledge Discovery Research Center studies the statistical modeling and inference algorithms that can be used to extract useful information from the huge amount of data which complex systems produce, and thus attempts to solve real-world problems in many different scientific domains, especially genomics, earth and space sciences.

Molecular Evolution Research Group

The Molecular Evolution Research Group researches the area of molecular phylogenetics, and seeks to develop statistical methods for inferring evolutionary trees of life using DNA and protein sequences.

— *Staff* —

Masami HASEGAWA, Prof. (-2007.3.31)
Jun ADACHI, Assoc. Prof. Ying CAO, Assist. Prof.

Subjects

- Modeling of biodiversity and evolution
- Inferring molecular phylogenies

- Bioinformatics of genome evolution

Date Assimilation Research Group

The Data Assimilation Research Group aims at developing new, advanced data assimilation techniques to combine different information from dynamical simulation and observation data.

— *Staff* —

Tomoyuki HIGUCHI, Prof. (Vice Director-General)

Takashi WASHIO, Visiting Prof. Genta UENO, Assist. Prof.

Ryo YOSHIDA, Assist. Prof.

Yoshinori TAMADA, Assist. Prof. (-2006.6.30)

Subjects

- Advanced data assimilation and adaptive simulation methods
- Automatic identification of the large-scale field aligned current system
- Information fusion of large-scale heterogeneous data with Bayesian approach
- Methodology for estimating a gene network with graphical models
- Data assimilation system in systems biology
- Knowledge discovery system for genome information analysis

Statistical Seismology Research Group

The Statistical Seismology Research Group is concerned with the evaluation of seismicity anomalies, detection of crustal stress changes, their modeling, and the probability forecasting of large aftershocks and earthquakes.

— *Staff* —

Yosihiko OGATA, Prof.

Shinji TODA, Visiting Prof.

Jiancang ZHUANG, Assist. Prof.

Subjects

- Diagnostic analysis of sequences of regional earthquakes and aftershocks
- Detection and evaluation of seismicity anomalies and crustal stress changes by statistical models
- Probability forecasting of large aftershocks and earthquakes

Statistical Genome Diversity Research Group

The Statistical Genome Diversity Research Group aims to construct novel methodologies for learning and inference from a variety of data sets in the rapidly growing area of bioinformatics.

— *Staff* —

Shinto EGUCHI, Director, Prof.

Satoshi KURIKI, Prof.

Hirofumi WAKAKI, Visiting Prof.

Mihoko MINAMI, Assoc. Prof.

Shiro IKEDA, Assoc. Prof.

Hironori FUJISAWA, Assoc. Prof. Tadayoshi FUSHIKI, Assist. Prof.

Subjects

- Statistical methods for gene expression analysis
- Statistical methods for SNP analysis
- Statistical methods for proteomic analysis
- Statistical confirmation of evidence under improperly superfluous information

Risk Analysis Research Center

The Risk Analysis Research Center is pursuing a scientific approach to the study of the increased uncertainty and risk associated with the increasing globalization of society and the economy. The center is also constructing a network for risk analysis in order to contribute to the creation of a reliable and safe society.

Food and Drug Safety Research Group

The Food and Drug Safety Research Group aims to develop the statistical framework and methodology of quantitative risk evaluation for substances ingested by the human body.

— *Staff* —

Toshiharu FUJITA, Prof.

Takemi YANAGIMOTO, Prof. (-2007.3.31)

Hiroe TSUBAKI, Director, Visiting Prof.

Manabu IWASAKI, Visiting Prof. Tosiya SATO, Visiting Prof.

Kunihiko HAYASHI, Visiting Prof. Satoshi AOKI, Visiting Assoc. Prof.

Toshimitsu HAMASAKI, Visiting Assoc. Prof.
Yoshimitsu HIEJIMA, Visiting Assoc. Prof.
Takaaki SHIMURA, Assist. Prof. Masayuki HENMI, Assist. Prof.

Environmental Risk Research Group

The Environmental Risk Research Group studies the statistical methodologies related to environmental risk and environmental monitoring.

— *Staff* —

Yukio MATSUMOTO, Visiting Prof.
Kazuo YAMAMOTO, Visiting Prof. Yoshiro ONO, Visiting Prof.
Nobuhisa KASHIWAGI, Assoc. Prof.
Koji KANEFUJI, Assoc. Prof. Hideshige TAKADA, Visiting Assoc. Prof.
Hirokazu TAKANASHI, Visiting Assoc. Prof.
Tomohiro TASAKI, Visiting Assoc. Prof.
Toshihiko KAWAMURA, Assist. Prof.

Financial Risk and Insurance Research Group

The Financial Risk and Insurance Research Group explores the use of statistical modeling methods to quantify the risks involved with financial instruments and insurance products.

— *Staff* —

Naoto KUNITOMO, Visiting Prof. Hiroshi TSUDA, Visiting Prof.
Satoshi YAMASHITA, Assoc. Prof. Seisho SATO, Assoc. Prof.
Yoshinori KAWASAKI, Assoc. Prof.
Toshinao YOSHIBA, Visiting Assoc. Prof.

Center for Engineering and Technical Support

The Center for Engineering and Technical Support assists the development of statistical science by managing the computer systems used for statistical computing, facilitating public outreach, and supporting the research activities of both staff and collaborators.

— *Staff* —

Junji NAKANO, Director, Prof.

Takashi OKASAKI, Prof. (Vice Director) (-2006.3.31)

Satoshi YAMASHITA, Assoc. Prof. (Vice Director)

Yoshinori TAMADA, Assist. Prof. (-2006.6.30)

Computing Facility Unit

The Computing Facility Unit is in charge of the management of computer facilities and software for research.

Networking Facility Unit

The Networking Facility Unit is in charge of the management of networking infrastructure used for research and is responsible for network security.

Education and Library Unit

The Education and Library Unit is in charge of planning statistical education courses to popularize research results and is responsible for maintaining an extensive library.

Public Outreach Unit

The Public Outreach Unit is in charge of the publication and editing of research results and is responsible for public relations.

Visiting Professors

To push forward the frontiers of interaction between statistics and other fields of science, the Institute provides positions for visiting professors. Each of the Institute's three departments and two centers have invited foreign and Japanese professors from universities and institutes as shown in the list below.

— Foreign Visiting Professors —

Bosch-Bayard, Jorge Francisco	(Cuba)	2005. 6.13–2005. 8.12
Myrvoll, Tor Andre	(Norway)	2005. 7. 1–2005. 8.31
Jimenez-Sobrino, Juan Carlos	(Cuba)	2005. 9.28–2005.12.27
Peterson, A. Spencer	(U.S.A.)	2005.10. 1–2005.10.29
Shi, Lei	(China)	2005.10.20–2005.11.17
Galka, Andreas	(Germany)	2005.11. 1–2006. 3.31
Zhong, Yang	(China)	2005.11.28–2006. 2.13

Dolbilin, Nikolai Petrovich	(Russia)	2006. 1. 1–2006. 3.31
Dutour Sikiric, Mathieu	(France)	2006. 1. 4–2006. 3.30
Copas, John Brian	(U.K.)	2006. 5. 9–2006. 6. 8
Hyvärinen, Aapo Johannes	(Finland)	2006. 5. 9–2006. 6. 9
Harte, David Shamus	(New Zealand)	2006. 7.24–2006. 9.22
Synodinos, Nicolaos Emmanuel	(U.S.A.)	2006. 8. 1–2006. 9.30
Doucet, Arnaud	(France)	2006. 8.14–2006.10.13
Biscay, Lirio Rolando Jose	(Cuba)	2006. 8.28–2006.10.27
Iacus, Stefano Maria	(Italy)	2006. 9. 4–2006.11. 2
Bosch-Bayard, Jorge Francisco	(Cuba)	2006.10. 1–2006.11.30
Dolbilin, Nikolai Petrovich	(Russia)	2007. 1.10–2007. 3. 9
Edler, Lutz	(Germany)	2007. 1.15–2007. 3.14

— *Japanese Visiting Professors* —

Aoki, Satoshi	2005. 8-2007. 3	Tsubaki, Hiroe	2005. 4-2007. 3
Fukasawa, Atsushi	2005. 4-2007. 3	Tsuda, Hiroshi	2005. 4-2007. 3
Hashimoto, Tetsuo	2005. 4-2007. 3	Washio, Takashi	2005. 4-2007. 3
Irino, Toshio	2005. 4-2007. 3	Yoshiba, Toshinao	2006. 1-2007. 3
Kamachi, Masafumi	2005. 4-2007. 3	Zheng, Yuejun	2005. 4-2006. 3
Kunitomo, Naoto	2005. 4-2007. 3	Fukui, Yoshinari	2006. 4-2007. 3
Matsubara, Nozomu	2005. 4-2007. 3	Hamasaki, Toshimitsu	2006. 6-2007. 3
Matsumoto, Yukio	2005. 4-2007. 3	Hayashi, Kunihiko	2006. 6-2007. 3
Miura, Ryoza	2005.11-2007. 3	Hiejima, Yoshimitsu	2006. 6-2007. 3
Mizuta, Masahiro	2005. 4-2007. 3	Koshiba, Takeshi	2006. 4-2007. 3
Nagafuchi, Osamu	2005. 4-2006. 3	Matsumoto, Makoto	2006. 4-2007. 3
Nishii, Ryuei	2005. 4-2006. 3	Shimizu, Kunio	2006. 4-2007. 3
Ono, Yoshiro	2005. 4-2007. 3	Takanashi, Hirokazu	2006. 4-2007. 3
Onodera, Tohru	2005. 4-2007. 3	Takada, Hideshige	2006. 4-2007. 3
Sato, Tosiya	2005. 8-2007. 3	Wakaki, Hirofumi	2006. 4-2007. 3
Taiji, Makoto	2005. 4-2007. 3	Yamamoto, Kazuo	2006. 4-2007. 3
Toda, Shinji	2005. 4-2007. 3		

Visiting Research Fellows

In addition to visiting professors, the Institute provides research fellowships to researchers in Japan and abroad, from companies as well as from universities. The Institute also provides support for those who are appointed

as staff of programs by the Japan Society for the Promotion of Science (JSPS). A list follows showing research fellows received during the period April 2005 to March 2007.

(The list does not show all of the visiting fellows from abroad. Foreign visiting research fellows are listed under “Foreign Visitors” on page 21.)

— *Projects researcher* —

Nishimoto, Yuriko	Tanokura, Yoko	Tomosada, Mitsuhiro
Iwata, Takaki	Kumon, Masayuki	Kawai, Ken-ichi
Cuturi, Marco	Sugimoto, Teruhisa	Maruyama, Yosihito
Tsuda, Yoshiyuki	Kawakita, Masanori	Nanjo, Kazuyoshi
Nishihara, Hidenori	Sato, Yuki	Miwa, Hidetsugu
Fujii, Yosuke	Myrvoll, tor Andre	Mollah Md Nural Haque
Watanabe, Shin-ichi	Kawarasaki, Satoko	Termier, Alexandre
Okabe, Masahiro		

— *Research fellow upon JSPS program* —

Nanjo, Kazuyoshi	Nikaido, Masato	Sugimoto, Teruhisa
Kobayashi, Kei	Shimizu, Shohei	Zhuang, Jiancang
Xia, Yu		

— *Japanese visiting research fellows* —

Hayashi, Koji	Nakano, Shin'ya	Mitsui, Hideya
Iwaki, Hiroko	Fujisaki, Yoh	Abe, Mitsuhiro
Ohtani, Shin-ichi	Togu, Hideo	Uesaka, Hiroyuki
Sakai, Hironori	Komiyama, Osamu	Kitahara, Tomonari

— *Students from graduate school* —

Maruyama, Yosihito	Matsuura, Naomi
--------------------	-----------------

Research Collaboration

The Institute runs a unique system to promote collaborative research activities between statisticians and scientists in related fields, such as the social sciences, the humanities, life sciences, earth and space sciences and engineering. The system was initiated in 1985 with a special intention, which has much to do with the past experience of the Institute. Since the very beginning of the history of the Institute, one of the basic principles has been to attach great importance to applications. The principle came from appreciating that innovative methodologies and theories of statistics are frequently developed in an effort to solve real problems.

In past decades the Institute has maintained research collaborations between universities, government offices, private companies and various organizations. During this time, much useful work, both in theory and application, has been produced. This tradition of open collaboration with scientists outside the Institute has created a progressive and liberal academic atmosphere which, we believe, has contributed to developing new interdisciplinary research fields in related sciences.

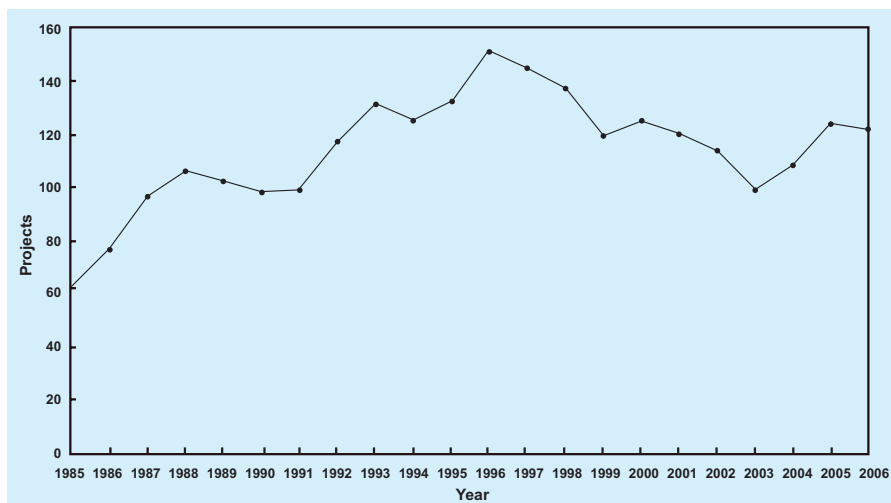
The cooperative research activity was maintained through various research fields at different levels with various types of collaboration, long before the Institute was reorganized into an inter-university research institute. Many remarkable results have been produced through collaborative research in the last decades. To our regret, however, when joint work is organized by researchers at the individual level, the fruit of the collaborative research tends to be received by the general public as a successful contribution to the science where the solved problems arose, even when our statisticians played the most essential role. Obviously this tendency comes from the inherently abstract nature of statistics. The statistician's contribution, although essential, is not as easy to explain to the general public as explaining the problem itself in applied science. Accordingly, it seemed that the value and the *raison d'être* of the statisticians and the Institute was not appreciated as much as other scientists and research institutes in

the applied sciences.

Our cooperative research system was initiated on the basis of two understandings. Firstly, this kind of collaborative research activity is beneficial to both statistics and other related sciences. Secondly, statisticians working in such circumstances need recognition, support and encouragement. We hope that the present system will play a role similar to the one that hospitals play in the medical sciences. Without constant stimuli from patients in the hospital, little development in medical sciences would be expected.

Since 1985 the system has been run by the Cooperative Research Committee, half of whose members are scientists from outside the Institute. Cooperative research projects between statisticians and scientists in related scientific fields are called for each year. More than a hundred projects in applied sciences and statistics are supported each year (see the figure below). In 1998, in hopes of enlarging the area of collaboration, the Institute relaxed a condition of application for projects which had stipulated that at least one member of the research project should belong to the Institute. The system of cooperation is open to projects that are to be planned and accomplished through international cooperation.

Our cooperative research projects are classified into several categories: cooperative use registration, general cooperative research 1, general cooperative research 2, cooperative research for exploratory study or young researchers, specially promoted research and cooperative research symposium.



Number of collaborative research projects

International Research Exchange

Historically, statistical science has developed in response to the need for statistical ideas and methods to be exploited in other fields of science and industry. Therefore the Institute has established a systematic way to promote cross-disciplinary research projects either at a domestic or an international scale (see the previous chapter).

The Institute has also pushed forward research collaboration with a wide variety of foreign institutions including universities and governmental agencies.

Since 1988, the Institute has entered into special relationship with the following institutes to conduct programs on academic exchange and facilitate joint research projects;

- The Statistical Research Division of the U.S. Bureau of Census, U.S.A., 1988-
- Stichting Mathematisch Centrum, The Netherlands, 1989-
- Statistical Research Associates Ltd., New Zealand, 2001-2006
- Statistical Research Center for Complex Systems, Seoul National University, Korea, 2002-
- Institute for Statistics and Econometrics, Humboldt University of Berlin, Germany, 2004-
- Institute of Statistical Science, Academia Sinica, Taiwan, 2005-
- The Steklov Mathematical Institute, Russia, 2005-
- Central South University, China, 2005-
- Soongsil University, Korea, 2006-
- Department of Statistics, University of Warwick, U.K., 2007-

The Institute has also been active in organizing international conferences and workshops. In January 2005-March 2007, 9 international symposia were held under the auspices of the Institute;

- International Symposium: The Art of Statistical Mataware, March 14-16, 2005

- International Conference: Nonparametric and Semiparametric Statistics, March 26-27, 2005
- ISM Symposium: A Bridge between Environmental and Statistical Sciences –Challenge to new development–, September 22, 2005
- International Symposium: 2nd International Symposium on Information Geometry and Its Applications, December 12-16, 2005
- International Workshop: The 4th International Workshop on Statistical Seismology (Statsei 4), January 9-13, 2006
- International Workshop: Time Series Analysis and Its Related Topics, January 23-25, 2006 (Joint Auspices)
- ISM Symposium: Packing and Random Packing, March 1-3, 2006
- ISM Symposium: Contributions of Statistical Science to Global Environmental Researches –Challenges to the Uncertainties in the Global Environmental Changes–, January 24, 2007
- ISM Symposium: Stochastic Models and Discrete Geometry, February 26-28, 2007

The Institute actively encourages researchers to come to talk or give lectures and also to stay for collaboration with the staff. As shown in the list below, the Institute has received 83 visitors from 26 different countries. Of these researchers, 58 entered into a visiting research fellowship including a visiting professorship. Another list follows showing all the colloquia that were given by foreign visitors.

Foreign Visitors (January 2005–March 2007)

- The asterisk * before a visitor's name indicates that he is a visiting professor or a visiting research fellow.
- Date in the list refers to the period of visiting professorship/research-fellowship or the date of colloquium.

From Bangladesh

*Mollah Md Nurul Haque 06.11.20-07.3.31

From Canada

Nishisato, S. 06. 2.20 Tian, Y. 05. 2.21

From China

*Ma, L. 06. 1. 8-06. 1.22 *Zhong, Y. 05.11.28-06. 2.13
*Shi, L. 05.10.20-05.11.17 *Zhuang, J. 04. 4.12-06. 4.11
*Wang, T. 06. 3.22-06. 4.21 * *ibd.* 07. 1. 4-07. 1.27
*Xia, Y. 04.11.24-06.11.23

From Croatia

*Dutour S., Maja 06. 1. 1-06. 3.31

From Cuba

*Biscay-Lirio, R. J. 06. 8.28-06.10.27 *Jimenez, J. C. 05. 3. 7-05. 3.31
*Bosch-Bayard, J. F. .. 05. 6.13-05. 8.12 * *ibd.* 05. 7. 1-05. 7. 8
* *ibd.* 05. 8.15-05. 9. 7 * *ibd.* 05. 9.28-05.12.27
* *ibd.* 06. 8.26-06.11.30 *Riera, J. 04. 7.29-05. 8. 4

From Czech

*Vlach, M. 04. 9. 1-05. 3.31

From Finland

*Hyvärinen, A. J. 06. 5. 9-06. 6. 9

From France

- | | |
|---------------------------------------|---------------------------------------|
| *Cuturi, M. 04. 7. 1-05. 3.31 | *Doucet, A. 06. 8.14-06.10.13 |
| * <i>ibd.</i> 05. 5.11-05. 6. 3 | *Dutour S., Mathieu 05. 3.11-05. 3.30 |
| * <i>ibd.</i> 05.11.22-07. 3.31 | * <i>ibd.</i> 06. 1. 4-06. 3.30 |
| *Deza, M. 04. 4. 1-05. 9.30 | <i>ibd.</i> 07. 1.26 |
| * <i>ibd.</i> 06. 2.17-06. 3.19 | *Senecal, S. 05.12. 5-07. 3.31 |
| * <i>ibd.</i> 07. 2.14-07. 2.28 | *Termier, A. 06. 4. 1-07. 3.31 |

From Germany

- | | |
|---------------------------------------|---|
| *Edler, L. 07. 1.15-07. 3.14 | *Heise, M. 05. 2.18-05. 2.27 |
| *Galka, A. 05. 7.14-06. 6. 8 | *Herrmann, J. M. 06. 2.13-06. 2.28 |
| * <i>ibd.</i> 07. 2.28-07. 3.29 | Laub, J. 05. 4.14 |
| Gaul, W. 06. 2.21 | *Unwin, A. 06. 2.19-06. 2.23 |
| *Hainzl, S. 05. 2.13-05. 2.26 | *Ziegenhagen, U. A.. 06. 2.19-06. 3.11 |

From Hungary

- Katona, G. 06. 3.22

From India

- Mukherjee, S. P. 05. 7.21
- *Sultana, N. 04. 4. 5-05. 3.31
- * *ibd.* 05. 5.11-05. 9.30

From Israel

- Inselberg, A. 05. 8. 2

From Italy

- | | |
|--------------------------------------|-----------------------------------|
| *Adelfio, G. 07. 2.13-07. 3.30 | *Negri, I. 06. 9. 4-07. 1. 3 |
| *Iacus, S. M. 06. 9. 4-07. 1. 3 | Pistone, G. 05.12. 8 |

From Korea

- | | |
|------------------------------------|-------------------------------------|
| Kim, J. -K. 06.12.27 | *Moon, Y. H. 06. 2.19-06. 2.22 |
| *Lee, J. J. 04.12. 6-05. 3. 5 | Park, B. U. 05. 3.26 |
| Lee, Y. 07. 2. 9 | Sung, J. 05. 1.20 |

From Madagascar

- *Rakotondraparany, F.. 06. 2.24-06. 3.25

From the Netherlands

Guta, M. 06. 2.28

From New Zealand

*Harte, D. S. 06. 7.24-06. 9.22

From Norway

*Birkenes, O. 05. 3. 1-05.12. 1 *Myrvoll, Tor A. 05. 7. 1-05. 8.31
ibd. 06. 8.24 * *ibd.* 06. 7.24-06. 8.31

From Russia

*Deza, E. 04. 9.15-05. 3.31 *Andreev, N. 07. 2.25-07. 3.10
* *ibd.* 05. 6.20-05. 7. 3 *Malkova, T. 07. 1.10-07. 2.10
*Dolbilin, N. 05. 1. 1-05. 3.31 *Pavlovich, P. A. 05. 3. 7-05. 3.31
* *ibd.* 06. 1. 1-06. 3.31
* *ibd.* 07. 1.10-07. 3 .9

From Singapore

*Zhao, G. Y. 06. 9.23-06.10. 2

From Spain

*Oliveras, K. G. 06. 2.16-06. 2.21

From Sweden

von Hofsten, C. 05. 7.22 Schon, T. 05. 2.18

From Switzerland

*Künsch, H. R. 06.12.28-07. 1.27

From Taiwan

*Chen, C.-H. 06. 2.17-06. 2.25

From U.K.

Anderson, C. W. 06. 9.22 Tong, H. 06. 1.25
*Copas, J. B. 06. 5. 9-06. 6. 8 *Vere-Jones, D. 06. 1. 8-06. 1.25
*Jasra, A. 06. 8.28-06. 9.10 Wynn, H. 05. 8.25
Steinberg, D. 05. 8. 1 *Wong, K. F. K. 06. 4. 1-06.12.31

From U.S.A.

*Faybusovich, L. 05. 7.18-05. 7.26	*Schoenberg, F. P. ... 06. 2. 1-06. 2.28
Haughton, D. 06. 7. 6	*Shedlock, A. M. 06. 2.20-06. 3. 9
*Hayter, A. J. 05.12. 9-05.12.23	*Synodinos, N. E. 06. 8. 1-07. 3.31
Hoyle, S. 06. 1.12	Yoshida, R. 06. 5.29
*Lennert-Cody, C. E. 06. 1. 8-06. 1.22	Yu, B. 07. 3.12
*Monteiro, R. D. C. ... 06. 9.23-06.10. 6	Zhang, J. 06. 2.21
Murakami, J. 05. 6.23	<i>ibd.</i> 06. 3.20
*Peterson, A. S. 05.10. 1-05.10.29	

Colloquia by Foreign Visitors
(2005.1-2007.3)

Speaker (Country)	Title	Date
Sung, J. (Korea)	Learning discrete latent variable models: U-likelihood and U-updates.	2005. 1.20
Dolbilin, N. (Russia)	Old problems and new results on unfoldings of convex polytopes and polyhedral surfaces.	2005. 2.14
Schon, T. (Sweden)	Nonlinear estimation and selected applications within signal processing and automatic control.	2005. 2.18
Tian, Y. (Canada)	How to characterize relations between estimators for general linear regression models by the matrix rank method.	2005. 2.21
Hainzl, S. (Germany)	Estimating background activity in seismicity data through statistical earthquake modeling and interevent-time statistics.	2005. 2.23
Park, B. U. (Korea)	Large sample approximation of the distribution for convex-hull estimators of boundaries.	2005. 3.26
Laub, J. (Germany)	Analyzing non-Euclidean pairwise data.	2005. 4.14
Cuturi, M. (France)	Semigroup kernels on measures.	2005. 5.27
Murakami, J. (U.S.A.)	Parameter estimate of a hidden Markov chain.	2005. 6.23
Bosch-Bayard, J. (Cuba)	Spatial temporal modeling of fMRI data and the visualization tools-(1), (2), (3), (4).	2005. 7. 4-8
Mukherjee, S. P. (India)	Stochastic programming-Applications in statistics and operational research.	2005. 7.21

Speaker (Country)	Title	Date
von Hofsten, C. (Sweden)	An action approach to infant development.	2005. 7.22
Steinberg, D. (U.K.)	Default models based on “Small” data sets: Leveraging multi-tree methods for reliable risk models.	2005. 8. 1
Inselberg, A. (Israel)	Multidimensional visualization and its applications.	2005. 8. 2
Inselberg, A. (Israel)	Multidimensional detective: visual & automatic knowledge discovery in high dimensional data.	2005. 8. 2
Bosch-Bayard, J. (Cuba)	Statistical modeling of fMRI-EEG data and designing toolboxes for their computations-part 1-25.	2005. 8.15 -19, 22-26, 29-31
Wynn, H. (U.K.)	A review of abstract tubes, with applications.	2005. 8.25
Myrvoll, Tor A. (Norway)	Greedy training for dPLRM with applications to ASR.	2005. 8.26
Birkenes, O. (Norway)	Probabilistic isolated-word speech recognition via maximum penalized logistic regression likelihood.	2005.11. 9
Pistone, G. (Italy)	Differential vs algebraic geometry in statistics.	2005.12. 8
Hoyle, S. (U.S.A.)	Population dynamics modeling for fisheries bycatch.	2006. 1.12
Lennert-Cody, C. E. (U.S.A.)	Species association in purse-seine catch-bycatch in the eastern Pacific Ocean.	2006. 1.13
Dutour S., Mathieu (France)	Equivariant L-types and lattice coverings, part I.	2006. 1.13
Dolbilin, N. (Russia)	Tilings whose all the tiles have arbitrarily large number of faces.	2006. 1.19
Dutour S., Mathieu (France)	Equivalent L-types and lattice coverings, part II.	2006. 1.23

Speaker (Country)	Title	Date
Tong, H. (U.K.)	Some recent developments in threshold moving average models.	2006. 1.25
Dutour S., Mathieu (France)	Equivariant L-type and the covering problem, part III.	2006. 1.26
Schoenberg, F. P. (U.S.A.)	Prototypes, separability, and K-functions, and their use in earthquake and wildfire risk assessment.	2006. 2. 8
Dutour S., Mathieu (France)	C-types, a generalization of L-types.	2006. 2.10
Nishisato, S. (Canada)	Date analysis through dimension reduction, An example of what is not what in data mining.	2006. 2.20
Gaul, W. (Germany)	Challenges concerning web data mining.	2006. 2.21
Zhang, J. (U.S.A.)	On classical information geometry in infinite dimension.	2006. 2.21
Herrmann, J. M. (Germany)	Criticality of avalanche dynamics in recurrent networks.	2006. 2.23
Guta, M. (the Netherlands)	An introduction to quantum statistics.	2006. 2.28
Zhang, J. (U.S.A.)	Change detection with identification: A Bayesian algorithm for sequential analysis.	2006. 3.20
Katona, G. (Hungary)	Random model for databases.	2006. 3.22
Hyvärinen, A. (Finland)	Computationally simple and statistically optimal estimation of non-normalized statistical models.	2006. 5.15
Copas, J. B. (U.K.)	Statistical sensitivity analysis—making the best of the impossible.	2006. 5.24
Yoshida, R. (U.S.A.)	Barvinok’s enumeration algorithm and its applications to statistics.	2006. 5.29

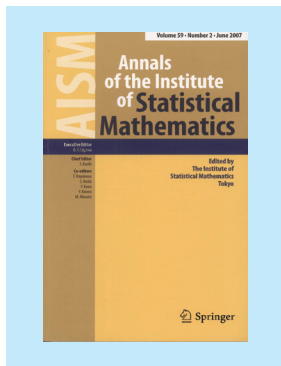
Speaker (Country)	Title	Date
Haughton, D. (U.S.A.)	Bayesian analysis of poverty rates: the case of Vietnamese provinces.	2006. 7. 6
Harte, D. (New Zealand)	Discrete time hidden Markov models.	2006. 8. 7
Birkenes, O. (Norway)	Automatic speech recognition with penalized logistic regression machines.	2006. 8.24
Jasra, A. (U.K.)	Markov chain Monte Carlo for Bayesian mixture models.	2006. 9. 4
Bosch-Bayard, J. (Cuba)	Spatial temporal modeling of fMRI data and the visualization tools -(1)-(11).	2006. 9.11 -15, 19-22, 25-29
Iacus, S. (Italy)	Iterated function systems and their application to statistics.	2006. 9.20
Anderson, C. W. (U.K.)	Continuous time extremes from discrete-time observations.	2006. 9.22
Wong, K.F.K. (U.K.)	Akaike causality in state space (I), (II), (III), (IV).	2006.12. 8-9, 11-12
Negri, I. (Italy)	Efficient estimation for ergodic diffusion processes.	2006.12.20
Kim, J.-k. (Korea)	Variance estimation with imputed data in survey sampling.	2006.12.27
Künsch, H. R. (Switzerland)	A bridge between particle and ensemble filters.	2007. 1.12
Dolbilin, N. (Russia)	The Minkowskii theorem on polyhedra and beyond.	2007. 1.19
Dutour S., Mathieu (France)	The recursive adjacency decomposition method.	2007. 1.26
Lee, Y. (Korea)	Confidence intervals on variance components: Modified large sample approach.	2007. 2. 9
Yu, B. (U.S.A.)	Lasso: algorithm, theory, and extension.	2007. 3.12

Publications

One of the driving forces behind the rapid progress of modern science has undoubtedly stemmed from the broad communication of research findings through international journals and reports. For the sake of publicizing its activities throughout academic and industrial circles, the Institute launched *the Annals of the Institute of Statistical Mathematics* (AISM) in 1949 shortly after its foundation. Today AISM has a worldwide reputation and is listed in citation review journals. The aims of AISM are shown in the excerpt below. Information for submitting papers can be found at <http://www.ism.ac.jp/>.

Aims and Scope of AISM

The journal aims to provide an international forum for open communications among statisticians and research workers who have the common purpose of advancing human knowledge through the development of the science and technology of statistics.



AISM will publish the broadest possible coverage of statistical papers of the highest quality. Emphasis will be placed on the publication of papers relating to (a) establishment of new areas of application, (b) development of new procedures and algorithms, (c) development of unifying theories, (d) analysis and improvement of existing procedures and theories, and (e) communication of empirical findings supported by real data.

The objective of AISM is to contribute to the advancement of statistics as a science for human handling of information to cope with uncertainties. Special emphasis will thus be placed on the publication of papers that will eventually lead to significant improvements in the practice of statistics. In addition to papers by professional statisticians, contributions from authors in various fields of application will be welcomed.

AISM is presently distributed by Springer-Verlag. Titles, abstracts, and

full texts of papers can be found at the following web sites: <http://www.ism.ac.jp/editsec/aism/contents.html> and <http://springerlink.com/>

The Institute publishes another periodical, *Proceedings of the Institute of Statistical Mathematics*. The periodical made its first appearance in 1953 and now carries scientific papers and articles on topics of research (in Japanese with abstracts in English). For titles of those papers, refer to the following: <http://www.ism.ac.jp/>

In addition to the two journals mentioned above, the Institute issues six technical reports:

- *Cooperative Research Reports*
- *Research Report*
- *Computer Science Monographs*
- *Research Memorandum*
- *ISM Report on Research and Education*
- *ISM Reports on Statistical Computing*

Research Memorandum, though named *memorandum*, has almost the content of full research papers, and fulfills the important mission of giving immediate publicity to research findings. *Research Memorandum* enables Institute staff to announce achievements with minimal delay.

A list of the six reports released from January 2005 to March 2007 follows.



(Research Memorandum)

Technical Reports

Cooperative Research Reports

(Reports, in Japanese and English, on the achievements emerging from collaborative research projects in the Institute.)

- No.173: Matani, A., The 21st's diagnosis engineering and applications (3). (*March 2005*)
- No.174: Takahashi, R., Extreme value theory and applications (2). (*March 2005*)
- No.175: Hiraba, S., Infinitely divisible processes and related topics (9). (*March 2005*)
- No.176: Ohno, Y., The development of indices for the health care status in the 21st century (3). (*March 2005*)
- No.177: Tanaka, M., Econophysics and its applications. (*March 2005*)
- No.178: Tsuchiya, Takashi, Optimization —Modeling and algorithms— 18. (*March 2005*)
- No.179: Sagae, M., Nonparametric and semiparametric statistics. (*March 2005*)
- No.180: Minami, M., Independent component analysis theory and its applications. (*March 2005*)
- No.181: Fujimoto, K., Informatics of dynamical systems (4) Signal transduction and communication. (*October 2004*)
- No.182: Ninomiya, Y., Summer seminar on statistics. (*August 2005*)
- No.183: Takahashi, R., Extreme value theory and applications (3). (*March 2006*)
- No.184: Hiraba, S., Infinitely divisible processes and related topics (10). (*March 2006*)
- No.185: Ohno, Y., Investigation on the production management of the medical care supply in hospital wards: Based on the time motion study. (*March 2006*)
- No.186: Konno, H., The 21st's diagnosis engineering and applications (4). (*March 2006*)
- No.187: Tanaka, M., Econophysics and its applications (2). (*March 2006*)
- No.188: Hirata, Y., Convenient photo-measurement and analysis on the evaluation of mophogenetic characters in plant breeding. (*March 2006*)
- No.189: Mitsuya, R., Statistical research of seating comfort. (*March 2006*)
- No.190: Ishikawa, S., Statistics for English collocation studies. (*March 2006*)

- No.191: Tsuchiya, Takashi, Optimization —Modeling and algorithms— 19. (March 2006)
- No.192: Fujimoto, K., Informatics of dynamical systems (5). Ecology and behavior of microorganisms. (January, 2006)
- No.193: Ohara, M., Spatial analysis about reproduction and genetic structure for clonal plants. (October, 2006)
- No.194: Takahashi, R., Extreme value theory and applications (4). (February 2007)
- No.195: Yamamuro, K., Infinitely divisible processes and related topics (11). (March 2007)
- No.196: Kashiwagi, N., Theory and practice of environmental data analysis. (March 2007)
- No.197: Iwaki, S., The 21st's diagnosis engineering and applications (5). (March 2007)
- No.198: Tanaka, M., Econophysics and its applications (3). (March 2007)
- No.199: Ishikawa, S., Statistical approaches to selecting basic words in Japanese and English. (March 2007)
- No.200: Koyama, Y., Research on statistical methods for determining distinctive vocabulary from ESP corpus and its application for language testing. (March 2007)
- No.201: Tabata, T., Multivariate approaches to linguistic variations across texts. (March 2007)
- No.202: Ohno, Y., The hospital and ward administration from the viewpoint of global medical supply chain. (March 2007)
- No.203: Tsuchiya, Takashi, Optimization —Modeling and algorithms— 20. (March 2007)
- No.204: Tsujitani, M., Survival analysis using machine learning. (March 2007)
- No.205: Fujimoto, K., Informatics of dynamical systems (6). (February 2007)

Research Report

(Technical reports, mostly in Japanese, on the methodology or survey and analysis of measured data.)

- No.94: Sakamoto, Y., Tsuchiya, Takahiro, Nakamura, Takashi and Maeda, T., A study of the Japanese national character: The eleventh nationwide survey (2003) —English edition—. (January, 2007)
- No.95: Yoshino, R. and Matsumoto, W. (eds.), The Asia-Pacific value survey —South Korea 2006 survey—. (March, 2007)

Computer Science Monographs

(Technical reports in English on Computer programs and software for statistical science.
Full text and supplementary materials of No.31 onwards can be downloaded from
<http://www.ism.ac.jp/>.)

- No.31:* Waddell, P. J., Mine, H. and Hasegawa, M., INTEROGATE 1.0. Exploration and testing of stationarity, reversibility and clock-likeness in sequence data. (*March 2005*)
- No.32:* Ogata, Y., Katsura, K. and Zhuang, J., TIMSAC84: Statistical analysis of series of events (TIMSAC84-SASE) version 2. (*April 2006*)
- No.33:* Ogata, Y., Statistical Analysis of Seismicity —Updated version (SASeis2006). (*April 2006*)

Research Memorandum

(Technical Reports, mostly in English, that give immediate publicity to research findings. The full
content of some of them can be downloaded from <http://www.ism.ac.jp/>.)

- No.931:* Sato, H., Parameter estimation of state space models by recursive grid search for Monte Carlo filter. (*January 18, 2005*)
- No.932:* Deza, E. and Deza, M., Lengths measures, scales and exotic distances. (*January 26, 2005*)
- No.933:* Cuturi, M., Fukumizu, K. and Vert, J.-P., Semigroup kernels on measures. (*January 28, 2005*)
- No.934:* Deza, E. and Deza, M., Distances in cosmology, astronomy and geography. (*January 28, 2005*)
- No.935:* Aki, S. and Hirano, K., Waiting time distributions for a run with additional constraints. (*March 3, 2005*)
- No.936:* Shimatani, K., Kawarasaki, S. and Manabe, T., Describing size-dependent mortality and size distribution by nonparametric models and selection by Akaike Bayesian Information Criterion. (*March 3, 2005*)
- No.937:* Dolbilin, N. and Tanemura, M., How many facets on average can a tile have in a tiling? (*March 30, 2005*)
- No.938:* Okabe, M. and Tanemrua, M., Bayesian estimation of soft-core interaction potential models for spatial point patterns. (*April 19, 2005*)
- No.939:* Wan, X., Iwata, K., Riera, J., Ozaki, T., Kitamura, M. and Kawashima, R., Artifact reduction for EEG/fMRI recording part 1: Nonlinear reduction of ballistocardiogram artifact. (*May 10, 2005*)

- No.940: Kuriki, S. and Takemura, A., Euler characteristic heuristic for approximating the distribution of the largest eigenvalue of an orthogonally invariant random matrix. (*May 16, 2005*)
- No.941: Zhuang, J., Multi-dimensional second-order residual analysis of space-time point processes and its applications in modelling earthquake data. (*May 30, 2005*)
- No.942: Fukumizu, K., Bach, F. R. and Gretton, A., Consistency of kernel canonical correlation analysis. (*June 2, 2005*)
- No.943: Sugimoto, T. and Ogawa, T., Properties of tilings by convex pentagons. (*June 10, 2005*)
- No.944: Tsuchiya, Takahiro, On the assumption required for the domain estimators for the item count technique. (*June 16, 2005*)
- No.945: Deza, E. and Deza, M., Distance metrics: main notions and generalizations. (*June 30, 2005*)
- No.946: Deza, E. and Deza, M., Distances on graphs and networks. (*July 1, 2005*)
- No.947: Fujisawa, H. and Eguchi, S., A new approach to robust parameter estimation against heavy contamination. (*July 15, 2005*)
- No.948: Inoue, K. and Aki, S., Joint distributions associated with compound patterns in a sequence of Markov dependent multistate trials. (*July 20, 2005*)
- No.949: Inoue, K. and Aki, S., On generating functions of waiting times and numbers of occurrences of compound patterns in a sequence of multi-state trials. (*July 20, 2005*)
- No.950: Ohara, A. and Eguchi, S., Geometry on positive definite matrices and V-potential function. (*July 27, 2005*)
- No.951: Kumon, M. and Takemura, A., On a simple strategy weakly forcing the strong law of large numbers in the bounded forecasting game. (*August 8, 2005*)
- No.952: Araki, K., Shimatani, K. and Ohara, M., Floral distribution, clonal structure, and their effects on pollination success in a self-incompatible *convallaria keiskei* population in northern Japan. (*August 8, 2005*)
- No.953: Hagiwara, K. and Fukumizu, K., A probabilistic upper bound for the degree of over-fitting to noise in neural network regression. (*August 9, 2005*)
- No.954: Wong, K. F., Galka, A., Yamashita, O. and Ozaki, T., Modelling non-stationary variance in EEG time series by state space GARCH

- model. (*August 26, 2005*)
- No.955: Nishiyama, Y., On tightness of l^∞ -valued local martingales with infinitely many jumps: metric and partitioning entropy approach. (*August 31, 2005*)
- No.956: Mollah, M. N. H., Sultana, N., Minami, M. and Eguchi, S., Exploring local PCA structure for dimensionality reduction by minimizing β -divergence. (*September 29, 2005*)
- No.957: Jimenez, J. C., Biscay, R. and Ozaki, T., Inference methods for discretely observed continuous-time stochastic volatility models: A commented overview. (*September 29, 2005*)
- No.958: Monteiro, R. D. C. and Tsuchiya, Takashi, A strong bound on the integral of the central path curvature and its relationship with the iteration complexity of primal-dual path-following LP algorithms. (*September 30, 2005*)
- No.959: Minami, M., Multivariate inverse Gaussian distribution as a limit of multivariate waiting time distributions. (*October 3, 2005*)
- No.960: Nishiyama, Y., Nonparametric inference for Lévy processes by continuous observation: a martingale approach. (*October 7, 2005*)
- No.961: Kumon, M., Studies of information quantities and information geometry of higher order cumulant spaces. (*October 24, 2005*)
- No.962: Ikeda, S., Sparse representation and piece-wise linear kernel. (*October 28, 2005*)
- No.963: Kumon, M., Takemura, A. and Takeuchi, K., Capital process and optimality properties of Bayesian Skeptic in the fair and biased coin games. (*November 4, 2005*)
- No.964: Riera, J. J., Jimenez, J. C., Wan, X., Kawashima, R. and Ozaki, T., Nonlinear local electro-vascular coupling. Part II: From data to neuronal masses. (*November 16, 2005*)
- No.965: Iwata, T. and Katao, H., The correlation between the phase of the moon and the occurrences of microearthquakes in the Tamba region through point-process modeling. (*December 16, 2005*)
- No.966: Zhuang, J., Second-order residual analysis of spatio-temporal point processes and applications in model evolution. (*December 19, 2005*)
- No.967: Zhuang, J. and Ogata, Y., Properties of the probability distribution associated with the largest event in an earthquake cluster and their implications to foreshocks. (*December 19, 2005*)
- No.968: Ishida, M., Sato, T., Suzuki, K., Shimada, S. and Kawase, T., Random number generator using a diode noise. (*December 20, 2005*)

- No.969: Niki, N., Machine generation of random numbers. (*December 20, 2005*)
- No.970: Niki, N., Physical random number generator for personal computers. (*December 20, 2005*)
- No.971: Hayashi, T. and Yoshida, N., Asymptotic normality of nonsynchronous covariance estimators for diffusion processes. (*December 22, 2005*)
- No.972: Hayashi, T. and Yoshida, N., Estimating correlations with nonsynchronous observations in continuous diffusion models. (*December 22, 2005*)
- No.973: Goto, S., Shimatani, K., Yoshimaru, H. and Takahashi, Y., Fat-tailed gene flow in the dioecious canopy tree species, *Fraxinus mandshurica* var. *japonica* revealed by microsatellites. (*December 27, 2005*)
- No.974: Kato, K., Shimatani, K. and Yamamoto, S.-I., Sapling bank dynamics of shade tolerant *Abies mariesii* in a subalpine old growth forest, central Japan. (*December 27, 2005*)
- No.975: Manabe, T., Shimatani, K., Kawarasaki, S., Aikawa, S.-I. and Yamamoto, S.-I., The patch mosaic of an old-growth warm-temperate forest: patch-level descriptions of 40-years gapping processes and community structures. (*January 5, 2006*)
- No.976: Dutour Sikiric, M. and Deza, M., Face-regular 3-valent two-faced spheres and tori. (*January 12, 2006*)
- No.977: Nakamura, K., Higuchi, T., Hirose, N. and Ueno, G., Ensemble-based nonlinear filters for sequential data assimilation and their applications. (*January 19, 2006*)
- No.978: Minami, M., Lennert-Cody, C. E., Gao, W. and Roman-Verdesoto, M. H., Modeling shark bycatch : The zero-inflated negative binomial regression model with smoothing. (*January 20, 2006*)
- No.979: Fushiki, T., Fujisawa, H. and Eguchi, S., Identification of biomarkers from mass spectrometry data using a “common” peak approach. (*January 25, 2006*)
- No.980: Tsuchiya, Takashi and Xia, Y., An extension of the standard polynomial-time primal-dual path-following algorithm to the weighted determinant maximization problem with semidefinite constraints. (*February 3, 2006*)
- No.981: Galka, A., Wong, K. F. K., Stephani, U., Muhle, H. and Ozaki, T., Identification of source components in multivariate time series by state space modelling. (*February 10, 2006*)
- No.982: Deza, E. and Deza, M., Distances on manifolds. (*February 18, 2006*)

- No.983: Shiraishi, Y., An upper bound on the convergence time of the Gibbs sampler in Ising models. (*February 28, 2006*)
- No.984: Kumon, M., Takemura, A. and Takeuchi, K., Game-theoretic versions of strong law of large numbers for unbounded variables. (*March 9, 2006*)
- No.985: Faybusovich, L., Moutonglang, T. and Tsuchiya, Takashi, Numerical experiments with universal barrier functions. (*March 15, 2006*)
- No.986: Yaguchi, H., Ueda, S. and Takashima, K., Construction of the new hash function SSI160. (*March 28, 2006*)
- No.987: Matsumoto, W., A perspective on surveys in the information society. (*March 30, 2006*)
- No.988: Inoue, K. and Aki, S., On waiting time distributions associated with compound patterns in a sequence of multi-state trials. (*April 11, 2006*)
- No.989: Nishiyama, Y., Additions to the paper “Weak convergence of some classes of martingales with jumps”. (*April 18, 2006*)
- No.990: Tsuda, Y., Bhattacharyya inequality for quantum state estimation. (*April 24, 2006*)
- No.991: Ninomiya, Y. and Fujisawa, H., A conservative test for multiple comparison based on highly correlated test statistics. (*June 7, 2006*)
- No.992: Ogata, Y., Seismic and geodetic anomalies preceding the rupture around the focal region : The Niigata-Ken-Chuetsu Earthquake of October 23, 2004, central Japan. (*July 4, 2006*)
- No.993: Tanaka, U. and Ogata, Y., Model selection and estimation of the Neyman-Scott type spatial cluster models. (*July 4, 2006*)
- No.994: Nakamura, K. and Tsuchiya, Takashi, A recursive recomputation approach for smoothing in nonlinear state space modeling —An attempt for reducing space complexity— . (*July 7, 2006*)
- No.995: Wakaura, M. and Ogata, Y., A time series model for air temperature anomalies. (*July 10, 2006*)
- No.996: Aki, S. and Hirano, K., Joint distributions of waiting time random variables for patterns. (*August 3, 2006*)
- No.997: Nishiyama, Y., Nonparametric estimation and testing time-homogeneity for Lévy processes. (*August 16, 2006*)
- No.998: Kumon, M., On the conditions for the existence of ancillary statistics in a curved exponential family. (*August 18, 2006*)
- No.999: Fujisawa, H. and Eguchi, S., Robust parameter estimation with a small bias against heavy contamination. (*August 18, 2006*)

- No.1000: Fujisawa, H., On a class of robust parameter estimation against heavy contamination. (*August 18, 2006*)
- No.1001: Tomosada, M. and Tsubaki, H., Proposition of new mixture model and mixed pixel classification method for classification of multispectral images. (*August 24, 2006*)
- No.1002: Ninomiya, Y., AIC for change-point models and its application. (*August 31, 2006*)
- No.1003: Hirai, Y. and Tsuchiya, Takahiro, How was the questionnaire in item count format viewed by the survey interviewers. (*September 5, 2006*)
- No.1004: Tsuchiya, Takahiro, Hirai, Y. and Ono, S., A comparative survey of the item count and direct questioning techniques via face-to-face personal interviewing. (*September 5, 2006*)
- No.1005: Kawakita, M. and Eguchi, S., Boosting method for local learning. (*September 13, 2006*)
- No.1006: Kawakita, M., Ikeda, S. and Eguchi, S., A bridge between boosting and a kernel machine. (*September 13, 2006*)
- No.1007: Shimatani, K., Kubota, Y., Araki, K., Aikawa, S.-I. and Manabe, T., Matrix models using very fine size classes and their applications to population dynamics of tree species: Bayesian nonparametric estimation. (*September 15, 2006*)
- No.1008: Negri, I., Efficiency of a class of unbiased estimators for the invariant distribution function of a diffusion process. (*September 22, 2006*)
- No.1009: Tsuchiya, Takahiro, Some statistical properties of Japanese self-administered attitude survey samples drawn with schools or classes as units. (*September 27, 2006*)
- No.1010: Ikeda, S., Learning binary classifiers for multi-class problem. (*September 28, 2006*)
- No.1011: De la Cruz, H., Biscay, R. J., Carbonell, F., Ozaki, T. and Jimenez, J. C., Higher order local linearization methods for solving stochastic differential equations with additive noise. (*October 12, 2006*)
- No.1012: Inoue, K. and Aki, S., On generalized birthday and coupon collection problems. (*October 25, 2006*)
- No.1013: Tsuchiya, Takahiro and Hirai, Y., Analysis of response effects in the item count technique via thinkaloud interviewing. (*October 26, 2006*)
- No.1014: Iacus, S. and Porro, G., An invariant and metric-free proximity measure and its applications to classification. (*November 16, 2006*)
- No.1015: Ishiguro, M. : Rock-scissors-paper game as human behavior. (*No-*

vember 17, 2006)

- No.1016: Iwata, T., Low detection capability for global earthquakes after the occurrence of large earthquakes: Investigation of the Harvard CMT catalogue. (*November 22, 2006*)
- No.1017: Kumon, M., Attainment of the capacity of nonwhite Gaussian channel with feedback. (*December 15, 2006*)
- No.1018: Wong, K. F. K. and Ozaki, T., Akaike causality in state space Part I —Instantaneous causality between visual cortex in fMRI time series. (*December 20, 2006*)
- No.1019: Negri, I. and Nishiyama, Y., Goodness of fit test for ergodic diffusion process. (*December 21, 2006*)
- No.1020: Hayashi, T. and Yoshida, N., Nonsynchronous covariance estimator and limit theorem. (*December 22, 2006*)
- No.1021: Yoshida, N., Polynomial type large deviation inequalities and convergence of statistical random fields. (*December 25, 2006*)
- No.1022: Waddell, P. J., Umehara, S., Griche, K.-C. and Kishino, H., Quantitative assessments of genome-wide indels support atlantogenata at the root of placental mammals. (*December 28, 2006*)
- No.1023: Iacus, S. M. and Yoshida, N., Estimation for the discretely observed telegraph process. (*December 27, 2006*)
- No.1024: Iacus, S. M., Uchida, M. and Yoshida, N., Parametric estimation for partially hidden diffusion processes sampled at discrete times. (*December 28, 2006*)
- No.1025: Bosch-Bayard, J., Riera-Diaz, J., Biscay-Lirio, R., Wong, K. F. K., Galka, A., Yamashita, O., Sadato, N., Kawashima, R., Valdes-Sosa, P., Miwakeichi, F. and Ozaki, T., Spatio-temporal correlations in fMRI time series: the whitening approach. (*February 9, 2007*)
- No.1026: Horoiwa, A., Yoshino, R. and, Zheng, Y., On the stability of public opinion data of Chinese value survey with respect to sampling methods —A note for the development of cultural manifold analysis (CULMAN). (*February 19, 2007*)
- No.1027: Tsunoda, H., Yoshino, R. and Yokoyama, K., On the Japanese social capital, spirituality and health —Gender and cultural differences in the relationships between self-reported health, social capital and spirituality— . (*March 9, 2007*)
- No.1028: Ueda, S. and Maehara, H., On the transition of household-size distributions. (*March 26, 2007*)
- No.1029: Shimatani, K., Kimura, M., Kitamura, K., Suyama, Y., Isagi, Y. and

Sugita, H., Determining the location of a deceased mother tree and estimating forest regeneration parameters using microsatellites and spatial genetic models. (*March 29, 2007*)

ISM Report on Research and Education

(Reports and documents concerned with education and research.)

- No.21:* Higuchi, T., Tsuchiya, Takashi, Iba, Y. and Fukumizu, K.(eds.), International Symposium on The Art of Statistical Metaware; Tokyo, Japan, March 14-16, 2005 Proceedings. (*March 2005*)
- No.22:* Nakamura, Takashi(ed.), Annual Symposium of the Graduate Students of the Department of Statistical Science, 2005. (*September 2005*)
- No.23:* Ogata, Y., Nanjo, K. Z. and Iwata, T.(eds.), The 4th International Workshop on Statistical Seismology; Hayama campus of the Graduate University for Advanced Studies, Japan January 9 - 13, 2006 Proceedings. (*January 2006*)
- No.24:* Kanefuji, K.(ed.), Annual Symposium of the Graduate Students of the Department of Statistical Science, 2006. (*September 2006*)

ISM Reports on Statistical Computing

(Technical reports in Japanese and English that describe management and manipulation of computer systems.)

- RSC-034:* Tanaka, S., Designing the homepage with Web standards "XHTML+CSS". (*September 2005*)
- RSC-035:* Tanaka, S. and Katsura, K. (eds.), Report of study results obtained by using the supercomputer system, 2004. (*December 2005*)
- RSC-036:* Tanaka, S. and Katsura, K. (eds.), Report of study results obtained by using the supercomputer system, 2005. (*October 2006*)

Published Papers and Books

Many of the achievements made by the staff of the Institute consist of scientific papers and monographs. Each of the staff has selected works worthy of note out of his/her papers and books published in the period January 2005, to March 2007, to complete the following list. Also included are works by visiting professors and students.

- Adachi, F., Washio, T. and Motoda, H.: Scientific discovery of dynamic models based on scale-type constraints, *IP SJ Transactions on Mathematical Modeling and Its Applications*, 47, SIG14(TOM15), 31-42, 2006.
- Akasaki, T., Nikaido, M., Tsuchiya, K., Segawa, S., Hasegawa, M. and Okada, N.: Extensive mitochondrial gene arrangements in coleoid Cephalopoda and their phylogenetic implications, *Molecular Phylogenetics and Evolution*, 38(3), 648-658, 2006.
- Amari, S., Takeuchi, K., Takemura, A. and Iba, Y.(editors) : *Computational Statistics II –Markov Chain Monte Carlo Methods and related topics*, *Frontiers of Statistical Sciences* (in Japanese), Iwanami Publishing Co., Tokyo, 12, 2005.
- Ando, T. and Yamashita, S.: A reduced form approach for the simultaneous estimation of hazard term structure and LGD (in Japanese), *FSA Discussion Paper Series*, 18, 2005.
- Aoki, S. and Takemura, A.: Markov chain Monte Carlo exact tests for incomplete two-way contingency tables, *Journal of Statistical Computation and Simulation*, 75(10), 787-812, 2005.
- Araki, K., Lian, CL., Shimatani, K. and Ohara, M.: Development of microsatellite markers in a clonal perennial herb, *Convallaria keiskei*, *Molecular Ecology Primer Note*, 6, 1144-1146, 2006.
- Arisue, N., Hasegawa, M. and Hashimoto, T.: Root of the eukaryota tree as inferred from combined maximum likelihood analyses of multiple molecular sequence data, *Molecular Biology and Evolution*, 22, 409-420, 2005.

- Chen, C.-c., Rundle, J. B., Holliday, J. R., Nanjo, K. Z., Turcotte, D. L., Li, S.-C. and Tiampo, K. F.: The 1999 Chi-Chi, Taiwan, earthquake as a typical example of seismic activation and quiescence, *Geophysical Research Letters*, 32(22), L22315, doi:10.1029/2005GL023991, 2005.
- Cooke, G. D., Welch, E. B., Peterson, S. A. and Nichols, S. A.: *Restoration and management of lakes and reservoirs*, 3rd Edition, CRC Taylor & Francis, Boca Raton, Florida, U.S.A., 2005.
- Copas, J. and Eguchi, S.: Local model uncertainty and incomplete data bias (with discussion), *Journal of Royal Statistical Society B*, 67, Part4, 459-513, 2005.
- Cuturi, M., Fukumizu, K. and Vert, J.-P.: Semigroup kernels on measures, *Journal of Machine Learning Research*, 6, 1169-1198, 2005.
- De la Cruz, H., Biscay, R. J., Carbonell, F. M., Jimenez, J. C. and Ozaki, T.: Local Linearization-Runge Kutta (LLRK) methods for solving ordinary differential equations, in *Lecture Notes in Computer Sciences 3991*, Springer-Verlag, Berlin Heidelberg, 132-139, 2006.
- Dolbilin, N. and Tanemura, M.: On tilings whose tiles have many facets, *Romanian Journal of Pure and Applied Mathematics*, 50(5-6), 595-611, 2005.
- Dolbilin, N. and Tanemura, M.: How many facets on average can a tile have in a tiling?, *Forma*, 21(3), 177-196, 2007.
- Doucet, A., Briers, M. and Senecal, S.: Efficient block sampling strategies for sequential Monte Carlo, *J. Comp. Graph. Stat.*, 15(3), 693-711, 2006.
- Dutour-Sikiric, M., Itoh, Y. and Poyarkov, A.: Cube packings, second moment and holes, *European Journal of Combinatorics*, 28, 715-725, 2007.
- Eguchi, S.: What is the statistical role on DNA chip analysis? (in Japanese), *Biotechnology-Journal*, 5, 430-435, 2005.
- Eguchi, S.: Information geometry and statistical pattern recognition, *Sugaku Expositions*, 19, 197-216, 2006.
- Eguchi, S. and Copas, J.: Interpreting Kullback-Leibler divergence with the Neyman-Pearson lemma, *Journal of Multivariate Analysis*, 97, 2034-2040, 2006.
- Endo, H., Yonezawa, T., Rakotondraparany, F., Sasaki, M. and Hasegawa, M.: The adaptational strategies of the hindlimb muscles in the Tenrecidae species including the aquatic web-footed tenrec (*Limnogale mergulus*), *Annals of Anatomy*, 188, 383-390, 2006.
- Faybusovich, L., Mouktonglang, T. and Tsuchiya, Takashi: Implementation

- of infinite-dimensional interior-point method for solving multi-criteria linear-quadratic control problem, *Optimization Methods and Software*, 21, 315-341, 2006.
- Fujii, Y., Ishizaki, S. and Kamachi, M.: Application of nonlinear constraints in a three-dimensional variational ocean analysis, *Journal of Oceanography*, 60, 655-662, 2005.
- Fujisawa, H. and Eguchi, S.: Robust estimation in the normal mixture model, *Journal of Statistical Planning and Inference*, 136, 3989-4011, 2006.
- Fujita, T.: Recent rapid increase in suicide deaths in Japan from a statistical viewpoint, in *An Australian-Japanese perspective on suicide prevention: culture, community and care* (eds. Leo, D. D., Herrman, H., Ueda, S. and Takeshima, T.), Commonwealth of Australia, Canberra, 51-56, 2006.
- Fujita, T. and Takeshima, T.: Discharge curve among psychiatric patients after admission and risk factors associated with long stay based on "Patient Survey" (in Japanese), *Seishin-shinkeigaku zasshi*, 108(9), 891-905, 2006.
- Fujita, T. and Mayama, T.: A database of anti-hypertensive drugs from drug use investigations and its practical use example (in Japanese), *Journal of the Japan statistical society*, 6(2), 205-217, 2007.
- Fukumizu, K., Bach, F. R. and Gretton, A.: Consistency of kernel canonical correlation, in *Proceedings of Eighth Workshop on Information-Based Induction Sciences*, Committee of the Eighth Workshop on Information-Based Induction Sciences, 63-68, 2005.
- Fukumizu, K.: Dimensionality reduction in regression with positive definite kernels (in Japanese), *Proceedings of the Institute of Statistical Mathematics*, 53(2), 189-200, 2005.
- Fukumizu, K., Bach, F. R. and Gretton, A.: Statistical convergence of kernel CCA, in *Advances in Neural Information Processing Systems* (eds. Weiss, Y., Schoelkopf, B. and Platt, J.), MIT Press, Cambridge MA, 18, 387-394, 2006.
- Fukumizu, K., Bach, F. R. and Gretton, A.: Statistical consistency of kernel canonical correlation analysis, *Journal of Machine Learning Research*, 8(Feb), 361-383, 2007.
- Fushiki, T., Komaki, F. and Aihara, K.: Nonparametric bootstrap prediction, *Bernoulli*, 11(2), 293-307, 2005.
- Fushiki, T.: Bootstrap prediction and Bayesian prediction under misspecified models, *Bernoulli*, 11(4), 747-758, 2005.

- Fushiki, T., Horiuchi, S. and Tsuchiya, Takashi: A maximum likelihood approach to density estimation with semidefinite programming, *Neural Computation*, 18, 2777-2812, 2006.
- Fushiki, T., Fujisawa, H. and Eguchi, S.: Identification of biomarkers from mass spectrometry data using a “common” peak approach, *BMC Bioinformatics*, 7, 358, doi:10.1186/1471-2105-7-358, 2006.
- Galka, A., Ozaki, T., Bosch Bayard, J. and Yamashita, O.: Whitening as a tool for estimating mutual information in spatiotemporal data sets, *J. of Statist. Physics*, 124(5), 1275-1315, 2006.
- Gao, W. and Kuriki, S.: Testing marginal homogeneity against stochastically ordered marginals for $r \times r$ contingency tables, *Journal of Multivariate Analysis*, 97(6), 1330-1341, doi:10.1016/j.jmva.2005.12.004, 2006.
- Geng, W., Nakajima, T., Takanashi, H. and Ohki, A.: Determination of total fluorine in coal by use of oxygen flask combustion method with catalyst, *Fuel*, 86(5-6), 715-721, 2006.
- Goto, S., Shimatani, K., Yoshimaru, H. and Takahashi, Y.: Fat-tailed gene flow in the dioecious canopy tree species *Fraxinus mandshurica* var. *japonica* revealed by microsatellites, *Molecular Ecology*, 15, 2985-2996, 2006.
- Hainzl, S. and Ogata, Y.: Detecting fluid signals in seismicity data through statistical earthquake modeling, *Journal of Geophysical Research*, 110(B5), B05S07, doi:10.1029/2004JB003247, 2005.
- Hamasaki, T. and Kim, S. Y.: Box and Cox power-transformation to confined and censored nonnormal responses in regression, *Computational Statistics & Data Analysis*, doi:10.1016/j.csda.2006.12.015, 2006.
- Hasegawa, M., Ren, W.-w., Yang, L.-q., Cao, Y. and Zhong, Y.: *Our Ancestor: A Saga, Gene Tells* (in Chinese), in *Easy Science Café Series*, Shanghai Scientific & Technological Education Publishing House, Shanghai, China, 2005.
- Hayakawa, F., Ioku, K., Akuzawa, S., Yoneda, C., Kazami, Y., Nishinari, K., Baba, Y. and Kohyama, K.: Research survey of Japanese consumers on texture vocabulary (in Japanese), *Nippon Shokuhin Kagaku Kogaku Kaishi*, 53(6), 327-336, 2006.
- Hayashi, M., Matsumoto, K. and Tsuda, Y.: A study of LOCC-detection of a maximally entangled state using hypothesis testing, *Journal of Physics A: Mathematical and General*, 39, 46, 14427-14446, doi:10.1088/0305-4470/39/46/013, 2006.

- Higuchi, T.: Particle filter (in Japanese), *The Journal of the Institute of Electronics, Information and Communication Engineers*, 88(12), 989-994, 2005.
- Holliday, J. R., Nanjo, K. Z., Tiampo, K. F., Rundle, J. B. and Turcotte, D. L.: Earthquake forecasting and its verification, *Nonlinear Processes in Geophysics*, 12(6), 965-977, 2005.
- Honda, K. and Nakano, J.: 3 dimensional parallel coordinates plot and its use for variable selection, in *Proceedings in Computational Statistics 2006* (eds. Rizzi, A. and Vichi, M.), Physica-Verlag, Heidelberg, 187-195, 2006.
- Hoshino, T., Okada, K. and Maeda, T.: Fit indices and model modification in structural equation modeling: A review and new findings (in Japanese), *The Japanese Journal of Behaviormetrics*, 32(2), 209-235, 2005.
- Hoshino, T.: Monte Carlo EM algorithm for a latent variable model with non-ignorable missing, *Behaviormetrika*, 32, 71-93, 2005.
- Hoshino, T. and Maeda, T.: Applying propensity-score adjustment to social surveys with non-random sampling and a selection criterion for covariates (in Japanese), *Proceedings of the Institute of Statistical Mathematics*, 54(1), 191-206, 2006.
- Hyvärinen, A.: Some extensions of score matching, in *Computational Statistics & Data Analysis*, Elsevier, Amsterdam, the Netherlands, 51, 2499-2512, 2007.
- Iba, Y. and Takahashi, H.: Exploration of multi-dimensional density of states by multicanonical Monte Carlo algorithm, *Progress of Theoretical Physics Supplement*, 157, 345-348, 2005.
- Iba, Y.: Basics of Markov Chain Monte Carlo (in Japanese), Computational Statistics II –Markov Chain Monte Carlo Methods and related topics, in *Frontiers of Statistical Sciences* (eds. Amari, S., Takeuchi, K., Takemura, A. and Iba, Y.), Iwanami Publishing Co., Tokyo, 12, 1-106, 2005.
- Iba, Y.: Modern Bayesian statistics and its influence on science and technology (in Japanese), *IEICE Technical Report*, NC2006-55, 61-66, 2006.
- Ikeda-Fukazawa, T., Fukumizu, K., Kawamura, K., Aoki, S., Nakazawa, T. and Hondoh, T.: Effects of molecular diffusion on trapped gas composition in polar ice cores, *Earth and Planetary Science Letters*, 229(3-4), 15 January 2005, 183-192, 2005.

- Imoto, S., Higuchi, T., Kim, S., Jeong, E. and Miyano, S.: Residual bootstrapping and median filtering for robust estimation of gene networks from microarray data, in *Computational Methods in Systems Biology, Lecture Notes in Bioinformatics* (eds. Danos, V. and Schaechter, V.), Springer, 3082, 149-160, 2005.
- Imoto, S., Higuchi, T., Goto, T. and Miyano, S.: Error tolerant model for incorporating biological knowledge with expression data in estimating gene networks, *Statistical Methodology*, 3, 1-16, 2006.
- Ishigaki, T., Higuchi, T. and Watanabe, K.: Online detection and classification of disasters by a multiple-input/single-output sensor for a home security system, in *Proceedings of 2006 IEEE World Congress on Computational Intelligence*, WCCI, British Columbia, Canada, 5775-5782, 2006.
- Ishigaki, T., Higuchi, T. and Watanabe, K.: Automatic online detection and classification of occurring disaster with a multivariable detecting sensor for home security system (in Japanese), *The Journal of the Institute of Electronics, Information and Communication Engineers*, J89-D(11), 2404-2412, 2006.
- Ishigaki, T., Higuchi, T. and Watanabe, K.: Spectrum classification for early fault diagnosis of LP gas pressure regulator based on Kullback-Leibler kernel, in *Proceedings of 2006 IEEE International Workshop on Machine Learning for Signal Processing*, National University of Ireland Maynooth, Co, Ireland, 453-458, 2006.
- Ishii, H., Yanai, H., Shiina, K., Maeda, T., Suzuki, N., Arai, K. and Otake, Y.: An investigation into views of faculty members on learning motivation and decline of ability of university students (in Japanese), *Research Bulletin of National Center for University Entrance Examinations*, 34, 19-58, 2005.
- Ito, S.: A numerical solution of state-constrained optimal control problems by dual sequential quadratic programming with cutting plane strategy (in Japanese), *Proceedings of the Institute of Statistical Mathematics*, 53(2), 361-373, 2005.
- Itoh, Y. and Mahmoud, H.: Age statistics in the Moran population model, *Statistics and Probability Letters*, 74, 21-30, 2005.
- Itoh, Y., Mahmoud, H. and Smythe, R.: Probabilistic analysis of maximal gap and total accumulated length in interval division, *Statistics & Probability Letters*, 76, 1356-1363, 2006.
- Iwasaki, M. and Tsubaki, H.: A bivariate generalized linear model with an

- application to meteorological data analysis, *Statistical Methodology*, 2, 175-190, 2005.
- Iwasaki, M. and Tsubaki, H.: Bivariate negative binomial generalized linear models for environmental count data, *Journal of Applied Statistics*, 33(9), 909-923, 2006.
- Iwashita, A., Nakajima, T., Takanashi, H., Ohki, A., Fujita, Y. and Yamashita, T.: Effect of pretreatment condition on the determination of major and trace elements in coal fly ashes using ICP-AES, *Fuel*, 85, 257-263, 2006.
- Iwashita, A., Nakajima, T., Takanashi, H., Ohki, A., Fujita, Y. and Yamashita, T.: Determination of trace elements in coal and coal fly ash by joint-use of ICP-AES and atomic absorption spectrometry, *Talanta*, 71(1), 251-257, 2006.
- Iwata, T. and Young, R. P.: Tidal stress/strain and the b -values of acoustic emissions at the Underground Research Laboratory, Canada, *Pure and Applied Geophysics*, 162(6-7), 1291-1308, 2005.
- Iwata, T., Imoto, M. and Horiuchi, S.: Probabilistic estimation of earthquake growth to a catastrophic one, *Geophysical Research Letters*, 32(19), L19307, doi:10.1029/2005GL023928, 2005.
- Iwata, T. and Katao, H.: Correlation between the phase of the moon and the occurrences of microearthquakes in the Tamba region through point-process modeling, *Geophysical Research Letters*, 33(7), L07302, doi:10.1029/2005GL025510, 2006.
- Iwata, T. and Nakanishi, I.: Dynamic triggering due to seismic waves of remote earthquakes: The Matsushiro, central Japan, example (in Japanese), *Chikyu monthly*, 28(9), 642-646, 2006.
- Jimenez, J. C. and Carbonell, F.: Rate of convergence of local linearization schemes for initial-value problems, *Applied Mathematics and Computation*, 171, 1282-1295, 2005.
- Jimenez, J. C., Biscay, R. J. and Ozaki, T.: Inference methods for discretely observed continuous-time stochastic volatility models: A commented overview, *Asia-Pacific Financial Markets*, 12, 109-141, 2006.
- Jimenez, J. C. and Ozaki, T.: An approximate innovation method for the estimation of diffusion processes from discrete data, *J. Time Series Analysis*, 27, 77-97, 2006.
- Kamachi, M., Usui, N., Fujii, Y., Matsumoto, S. and Nakano, T.: Metrics on data assimilation product –GODAE metrics– (in Japanese), *Kaiyou*, 38, 528-535, 2006.

- Kamachi, M., Fujii, Y., Ishizaki, S., Matsumoto, S., Nakano, T. and Yasuda, T.: Recent progress in ocean data assimilation on climate in tropical pacific (in Japanese), *Proceedings of the Institute of Statistical Mathematics*, 54(2), 223-245, 2006.
- Kamiyama, M. and Higuchi, T.: Adjustment of sampling locations in rail-geometry datasets:Using dynamic programming and non-linear filtering, *Systems and Computers in Japan*, 37(1), 61-70, 2006.
- Kanari, Y., Clerici, M., Abe, H., Kawabata, H., Trabottoni, D., Locaputo, S., Mazzotta, F., Fujisawa, H., Niwa, A., Ishihara, C., Takei, Y. A. and Miyazawa, M.: Genotypes at chromosome 22q12-13 are associated with HIV-1-exposed but uninfected status in Italians, *AIDS*, 19(10), 1015-1024, 2005.
- Kaneita, Y., Ohida, T., Uchiyama, M., Takemura, S., Kawahara, K., Yokoyama, E., Miyake, T., Harano, S., Suzuki, K. and Fujita, T.: The relationship between depression and sleep disturbances: A Japanese nationwide general population survey, *Journal of Clinical Psychiatry*, 67(2), 196-203, 2006.
- Kashiwagi, N., Yoshizawa, T., Ibaraki, T., Kato, K., Hashimoto, S. and Sasaki, Y.: Estimation of contribution of unidentified sources to environmental contamination (in Japanese), *Proceedings of the Institute of Statistical Mathematics*, 54(1), 123-146, 2006.
- Kasuya, M.: Regime switching approach to monetary policy effects, *Applied Economics*, 37(3), 307-326, 2005.
- Kato, S., Shimizu, K. and Shieh, G. S.: A circular-circular regression model, *Research Report*, Department of Mathematics, Keio University, KSTS/RR-06/006, 2006.
- Kawakita, M., Minami, M., Eguchi, S. and Lennert-Cody, C. E.: An introduction of the predictive technique AdaBoost with a comparison to generalized additive models, *Fisheries Research*, 76(3), 328-343, 2005.
- Kawamura, T. and Saisho, Y.: Stochastic models describing human metabolic processes using SDEs with reflection, *Stochastic models*, 22, 273-287, 2006.
- Kawamura, T., Iwase, K. and Kanefuji, K.: An approach to the signal-noise ratio based on the proportional models (in Japanese), *Journal of the Japanese Society for Quality Control*, 36(3), 91-99, 2006.
- Kawasaki, Y. and Ando, T.: Estimation term structure using nonlinear splines: a penalized likelihood approach, in *MODSIM05 Interna-*

- tional Congress on Modeling and Simulation, Advances in Applications for Management and Decision Making*(eds. Zerger, A. and Argent, R. M.), Modeling and Simulation Society of Australia and New Zealand Inc., Melbourne, 864-870, 2005.
- Kitagawa, G.: *Introduction to Time Series Analysis* (in Japanese), Iwanami Shoten, Tokyo, 2005.
- Kitagawa, G., Kishino, H., Higuchi, T., Yamashita, S. and Kawasaki, Y.: *Model Validation*(in Japanese), Kyoritsu Shuppan Co. Ltd., Tokyo, 2005.
- Kitagawa, G., Takanami, T. and Matsumoto, N.: State space approach to signal extraction problems in seismology, time series analysis and applications to geophysical systems, in *The IMA Volumes in Mathematics and its Applications* (eds. Brillinger, D. R., Robinson, E. A. and Schoenberg, F. P.), Springer, 139, 11-39, 2005.
- Kitagawa, G.: Signal extraction and knowledge discovery based on statistical modeling, *Theoretical Computer Science*, 364(1), 132-142, 2006.
- Kitano, M., Aoyama, K. and Shimizu, K.: Recursion formulae for discrete probability distributions (in Japanese), *Proceedings of the Institute of Statistical Mathematics*, 54(1), 147-175, 2006.
- Kobayashi, I., Nakano, J., Yamamoto, Y. and Fujiwara, T.: Implementing data mining functions on a Java-based statistical system (in Japanese), *Bulletin of the Computational Statistics of Japan*, 18(1), 15-25, 2006.
- Kobayashi, K., Kawasaki, H. and Takemura, A.: Parallel matching for ranking all teams in a tournament, *Advances in Applied Probability*, 38(8), 804-826, 2006.
- Kobayashi, K. and Komaki, F.: Information criteria for support vector machines, *IEEE transactions on Neural Networks*, 17(3), 571-577, 2006.
- Koga, T., Kanefuji, K. and Nakama, K.: Individual reference intervals of hematological and serum biochemical parameters in cynomolgus monkeys, *International Journal of Toxicology*, 24, 377-385, 2005.
- Koyama, T., Yoshino, H., Takeuchi, M., Keller, M., Arano, I. and Hamasaki, T.: Use of independent data monitoring committee for protocol entitled “Double-blind, placebo-controlled, randomized withdrawal study to evaluate the acute efficacy of sertraline in depression” (in Japanese), *Japanese Journal of Clinical Psychopharmacology*, 9, 1641-1646, 2006.
- Kumon, M. and Takemura, A.: On a simple strategy weakly forcing the

- strong law of large numbers in the bounded forecasting game, *Annals of the Institute of Statistical Mathematics*, doi:10.1007/s10463-007-0125-5, 2007.
- Kunitomo, N. and Takaoka, M.: Seasonality, RegARIMA(X-12ARIMA) model and seasonal switching time series models (in Japanese), *Journal of the Japan Statistical Society*, Japanese Issue, 35(1), 1-26, 2005.
- Kunitomo, N. and Ichiba, T.: On multi-period statistical risk management methods and equity-linked life insurance (in Japanese), *Journal of the Japan Statistical Society*, Japanese Issue, 35(2), 103-124, 2006.
- Kurabayashi, A., Usuki, C., Mikami, N., Fujii, T., Yonekawa, H., Sumida, M. and Hasegawa, M.: Complete nucleotide sequence of the mitochondrial genome of a Malagasy poison frog *Mantella madagascariensis*: Evolutionary implications on mitochondrial genomes of higher anuran groups, *Molecular Phylogenetics and Evolution*, 39, 223-236, 2006.
- Kuriki, S.: Asymptotic distribution of inequality-restricted canonical correlation with application to tests for independence in ordered contingency tables, *Journal of Multivariate Analysis*, 94(2), 420-449, 2005.
- Lane, I. R., Kawahara, T., Matsui, T. and Nakamura, S.: Dialogue speech recognition by combining hierarchical topic classification and language model switching, *IEICE*, E88-D, 3, 2005.
- Lane, I. R., Kawahara, T., Matsui, T. and Nakamura, S.: Out-of-domain utterance detection using classification confidences of multiple topics, *IEEE Transactions on Speech and Audio Processing*, 15(1), 150-161, 2007.
- Lee, A., Copas, J., Henmi, M., Gin, T. and Chung, C.K.: Publication bias affected the estimate of postoperative nausea in an acupoint stimulation systematic review, *J. of Clinical Epidemiology*, 59, 980-983, 2006.
- Lee, S., Nishiyama, Y. and Yoshida, N.: Test for parameter change in diffusion processes by cusum statistics based on one-step estimators, *Annals of the Institute of Statistical Mathematics*, 58, 211-222, 2006.
- Lee, S., Park, S., Maekawa, K. and Kawai, K.: Test for parameter change in ARIMA models, *Communications in Statistics: Simulation and Computation*, 35(2), 429-439, 2006.
- Li, Z., Liu, Q., Song, M., Zheng, Y., Nan, P., Cao, Y., Chen, G., Li, Y. and

- Zhong, Y.: Detecting correlation between sequence and expression divergences in a comparative analysis of human serpin genes, *BioSystems*, 82, 223-226, 2005.
- Lui, A. T. Y., Hori, T., Ueno, G. and Mukai, T.: Plasma transport from multicomponent approach, *Geophysical Research Letters*, 32, L06101, doi:10.1029/2004GL021891, 2005.
- Maeda, T.: A study on the characteristic of mail survey: A comparison with face-to-face interviewing (in Japanese), *Proceedings of the Institute of Statistical Mathematics*, 53(1), 57-81, 2005.
- Maehara, H. and Ueda, S.: Pivotal inversions of a finite point-set, *Yokohama Mathematical Journal*, 53, 119-126, 2007.
- Maekawa, K., Lee, S., Morimoto, T. and Kawai, K.: Jump diffusion model: An application to the Japanese stock market, in *MODSIM 2005 International Congress on Modelling and Simulation* (eds. Zerger, A. and Argent, R. M.), Modelling and Simulation Society of Australia and New Zealand, 893-899, ISBN: 0-9758400-2-9, 2005.
- Maruyama, Y.: The effect of non-normality on the distribution of sample fourth order cumulant under elliptical populations, *SUT Journal of Mathematics*, 41, 97-116, 2005.
- Maruyama, Y.: Asymptotic properties for measures of multivariate kurtosis in elliptical distributions, *International Journal of the Pure and Applied Mathematics*, 25, 407-421, 2005.
- Maruyama, Y.: Asymptotic expansions of the null distributions of some test statistics for profile analysis in general distributions, *Journal of Statistical Planning and Inference*, 137, 506-526, 2007.
- Maruyama, Y.: On Srivastava's multivariate sample skewness and kurtosis under non-normality, *Statistics & Probability of Letters*, 77, 335-342, 2007.
- Matsubara, M., Yamaguchi, E. and Sato, S.: Risk premium factors in investment in farming land for farming purposes (in Japanese), *Journal of Rural Planning Association*, 24(2), 123-134, 2005.
- Matsui, T.: "Speaker Verification" in Chapter 7, Spoken Language Systems, *Advanced Information Technology* (eds. Nakagawa, S., Okada, M. and Kawahara, T.), Ohmsha IOS Press, Netherlands, 3, 2005.
- Matsui, T. and Tanabe, K.: dPLRM-based speaker identification using log-power spectrum (in Japanese), in *Proceeding of 2007 Spring Meeting of Acoustic Society of Japan*, I- 5-6, 2005.
- Matsui, T., Soong, F. K. and Juang, B. -H.: Verification of multi-class rec-

- ognition decision: A classification approach, *IEICE*, E88-D, 3, 2005.
- Matsui, T. and Tanabe, K.: dPLRM-based speaker identification (in Japanese), *Proceedings of the Institute of Statistical Mathematics*, 53(2), 201-210, 2005.
- Matsui, T. and Tanabe, K.: Comparative study of speaker identification methods: dPLRM, SVM and GMM, *IEICE Trans. Inf. & Syst.*, E89-D(3), 2006.
- Matsumoto, W.: Relation between raison d'être and organizing in the non-profit sector (in Japanese), *Journal of Business Management*, 18, 56-68, 2006.
- Matsumoto, W.: Steadiness of trust in organizations: Multiple group analysis of the JGSS cumulative data 2000-2003 (in Japanese), *JGSS Monographs* (eds. Institute of Regional Studies, Osaka University of Commerce, and Institute of Social Science, University of Tokyo), 5, 59-69, 2006.
- Matsumoto, W.: Sense of trust in organizations in East Asia: Analysis for a cross-national comparative study (in Japanese), *Japanese Journal of Behaviormetrics*, 33(1), 25-40, 2006.
- Matsumoto, W.: Volunteer activities, membership of nonprofit organizations, and views of work style from JGSS-2005 (in Japanese), *JGSS Monographs* (eds. Institute of Regional Studies, Osaka University of Commerce, and Institute of Social Science, University of Tokyo), 6, 83-94, 2007.
- Matsuura, M. and Eguchi, S.: Modeling late entry bias in survival analysis, *Biometrics*, 61, 559-566, 2005.
- Minami, M.: Analysis of shark bycatch counts (in Japanese), *Tokyo University of Science, Science Forum*, 2, 18-23, 2005.
- Minami, M., Lennert-Cody, C. E., Gao, W. and Roman-Verdesoto, M.: Modeling shark bycatch: The zero-inflated negative binomial regression model with smoothing, *Fisheries Research*, 84, 210-221, 2007.
- Mitsunaga, H., Hoshino, T., Shigemasu, K. and Mayekawa, S.-I.: Parameter estimation of structural equation models using latent variable scores (in Japanese), *Japanese Journal of Behaviormetrics*, 32(1), 21-33, 2005.
- Mitsunaga, Y., Washio, T. and Motoda, H.: Mining quantitative frequent items using adaptive density-based subspace clustering (in Japanese), *Transactions of the Japanese Society for Artificial Intelligence*, 21(5), 439-449, 2006.

- Miwa, N., Nakamura, T., Naruse, Y., Ooe, Y. and Ohno, Y.: The effects of various factors on cerebrovascular disease mortality rates in the 20th century and future trends in Japan (in Japanese), *Japanese Journal of Public Health*, 53(7), 493-502, 2006.
- Miyasato, Y.: Iterative learning control of robotic manipulators by hybrid adaptation schemes –application of 2-dimensional adaptive control–, Preprints of the 16th IFAC World Congress, 2005.
- Miyasato, Y.: Nonlinear adaptive H_∞ control for robotic manipulators (in Japanese), *Transaction of the Institute of Systems, Control and Information Engineers*, 49(5), 190-192, 2005.
- Miyasato, Y.: Adaptive control of nonholonomic systems –inverse optimality and application to mobile robots–, *Advanced Robust and Adaptive Control –Theory and Applications–* (eds. Cheng, D., Sun, Y., Shen, T. and Ohmori, H.), Tsinghua University Press, Springer, 163-178, 2005.
- Miyasato, Y.: Adaptive H_∞ control of nonholonomic systems based on inverse optimality, in *Proceedings of SICE Annual Conference*, 1808-1813, 2005.
- Miyasato, Y.: Stable adaptive controller design for uncertain phase shift, *Annual Review in Control*, 29, 217-228, 2005.
- Miyasato, Y.: Model reference adaptive H_∞ control for distributed parameter systems of parabolic type by finite dimensional controllers, in *Proceedings of 17th International Symposium on Mathematical Theory of Networks and Systems*, 1140-1148, 2006.
- Miyasato, Y.: Model reference adaptive control of polytopic LPV systems ~an alternative approach to adaptive control~, in *Proceedings of the 2006 IEEE CCA/CACSD/ISIC*, 2012-2017, 2006.
- Miyasato, Y.: A simple redesign of adaptive control for nonlinear parametric models, in *Proceedings of SICE-ICASE International Joint Conference 2006*, 2404-2407, 2006.
- Miyasato, Y.: Adaptive nonlinear H_∞ control systems via neural network approximators, in *Proceedings of the 2006 IEEE CCA/CACSD/ISIC*, 2349-2354, 2006.
- Miyasato, Y.: Adaptive H_∞ control of nonholonomic systems based on inverse optimality and its application to mobile robot, in *Proceedings of the 45th IEEE Conference on Decision and Control*, 3046-3051, 2006.
- Miyasato, Y.: Model reference adaptive H_∞ control for distributed parameter systems of hyperbolic type by finite dimensional controllers, in

- Proceedings of the 45th IEEE Conference on Decision and Control*, 459-464, 2006.
- Miyoshi, Y. and Yoshino, R.: A comparative study of work value of the East Asia people –Japan, China, Taiwan, and South Korea– (in Japanese), *The Japanese Journal of Behaviormetrics*, 32(2), 173-189, 2005.
- Mizuta, M.: Functional data and their analysis (in Japanese), *Journal of Japan Society for Fuzzy Theory and Intelligent Informatics*, 17(4), 413-417, 2005.
- Mollah, Md Nurul haque, Eguchi, S. and Minami, M.: Robust prewhitening for ICA by minimizing beta-divergence and its application to FastICA, *Neural Processing Letters*, 25, 91-110, 2007.
- Mollah, Nurul Haque, Minami, M. and Eguchi, S.: Exploring latent structure of mixture ICA models by the minimum beta-divergence method, *Neural Computation*, 18, 166-190, 2006.
- Moral, P. D., Doucet, A. and Peters, G. W.: Asymptotic and increasing propagation of chaos expansions for genealogical particle models, *Teoriya Veroyatnostei i ee Primeneniya* (to be reprinted in *SIAM Theory of Probability and Its Applications*), 51(3), 2006.
- Moral, P. D., Doucet, A. and Jasra, A.: Sequential Monte Carlo samplers, *Journal of the Royal Statistical Society*, B, 68, Part 3, 411-436, 2006.
- Morimoto, T. and Kawasaki, Y.: An empirical comparison of GARCH models based on intraday value at risk (in Japanese), *Proceedings of the Institute of Statistical Mathematics*, 54(1), 5-21, 2006.
- Morimoto, T. and Kawasaki, Y.: An empirical comparison of GARCH models based on intraday value at risk, in *Advances in Computational Methods in Sciences and Engineering 2005* (ed. Simos, T. and Maroulis, G.), Brill Academic Publishers, Leiden, The Netherlands, 4, 1299-1302, 2005.
- Muller, M., Baier, G., Galka, A., Stephani, U. and Muhle, H.: Detection and characterization of changes of the correlation structure in multivariate time series, *Physical Review*, E 71, 046116, 2005.
- Nagasaki, M., Yamaguchi, R., Yoshida, R., Imoto, S., Doi, A., Tamada, Y., Matsuno, H., Miyano, S. and Higuchi, T.: Genomic data assimilation for estimating hybrid functional Petri net from time-course gene expression data, in *Proceedings of The Sixth International Workshop on Bioinformatics and Systems Biology (IBSB2006)*, Universal Academy Press, INC., 17(1), 46-61, 2006.

- Nakamura, K., Ueno, G. and Higuchi, T.: Data assimilation: Concept and algorithm (in Japanese), *Proceedings of the Institute of Statistical Mathematics*, 53(2), 211-229, 2005.
- Nakamura, K., Higuchi, T. and Hirose, N.: Application of particle filter to identification of tsunami simulation model, in *Proceedings of Joint 3rd International Conference on Soft Computing and Intelligent Systems and 7th International Symposium on advanced Intelligent Systems (SCIS & ISIS 2006)*, 1890-1895, 2006.
- Nakamura, K., Higuchi, T. and Hirose, N.: Sequential data assimilation : information fusion of a numerical simulation and large scale observation data, *Journal of Universal Computer Science*, 12(6), 608-626, 2006.
- Nakamura, N., Ueno, G., Higuchi, T. and Konishi, S.: Missing region modeling and the multivariate normal mixture model (in Japanese), *Japanese J. Appl. Statist.*, 34(2), 57-73, 2005.
- Nakamura, R., Satake, K., Toda, S., Uetake, T. and Kamiya, S.: Three-dimensional attenuation (Qs) structure beneath the Kanto district, Japan, as inferred from strong motion records, *Geophysical Research Letters*, doi:10.1029/2006GL027352, 2006.
- Nakamura, Takahiro, Shoji, A., Fujisawa, H. and Kamatani, N.: Cluster analysis and association study for structured multilocus genotype data, *Journal of Human Genetics*, 50(2), 53-61, 2005.
- Nakamura, Takashi: Reconsideration of a Bayesian age-period-cohort model with age-by-period interaction effects (in Japanese), *Proceedings of the Institute of Statistical Mathematics*, 53(1), 103-132, 2005.
- Nakanishi, K., Washio, T., Mitsunaga, Y., Fujimoto, A. and Motoda, H.: A classification method based on subspace clustering and association rules (in Japanese), *Transactions of the Japanese Society for Artificial Intelligence*, 21(6), 526-536, 2006.
- Nanjo, K. Z., Nagahama, H. and Yodogawa, E.: Symmetry of fault patterns: Quantitative measurement of anisotropy and entropic heterogeneity, *Mathematical Geology*, 37(3), 277-293, doi:10.1007/s11004-005-1559-z, 2005.
- Nanjo, K. Z., Turcotte, D. L. and Shcherbakov, R.: A model of damage mechanics for the deformation of the continental crust, *Journal of Geophysical Research*, 110(B7), B07403, doi:10.1029/2004JB003438, 2005.
- Nanjo, K. Z. and Turcotte, D. L.: Damage and rheology in a fiber-bundle

- model, *Geophysical Journal International*, 162(3), 859-866, doi:10.1111/j.1365-246X.2005.02683.x, 2005.
- Nanjo, K. Z., Holliday, J. R., Chen, C.-c., Rundle, J. B. and Turcotte, D. L.: Forecasting the locations of future large earthquakes, using pattern informatics method: A review (in Japanese), *Proceedings of the Institute of Statistical Mathematics*, 54(2), 281-297, 2006.
- Nanjo, K. Z., Nagahama, H. and Yodogawa, E.: Symmetry of earthquake patterns: Asymmetry and rotation in a disordered seismic source, *Acta Geophysica*, 54(1), 3-14, doi:10.2478/s11600-006-0002-2, 2006.
- Nanjo, K. Z., Holliday, J. R., Chen, C.-c., Rundle, J. B. and Turcotte, D. L.: Application of a modified pattern informatics method to forecasting the locations of large future earthquakes in the central Japan, *Tectonophysics*, 424, 351-366, doi:10.1016/j.tecto.2006.03.043, 2006.
- Nanjo, K. Z., Rundle, J. B., Holliday, J. R. and Turcotte, D. L.: Pattern informatics and its application for optimal forecasting of large earthquakes in Japan, *Pure and Applied Geophysics*, 163, 2417-2432, doi:10.1007/s00024-006-0130-2, 2006.
- Nishii, R. and Eguchi, S.: Image classification based on Markov random field models with Jeffreys divergence, *Journal of Multivariate Analysis*, 97, 1997-2008, 2006.
- Nishii, R. and Eguchi, S.: Supervised image classification of multispectral images based on statistical machine learning, in *Signal and Image Processing for Remote Sensing* (ed. Chen, C. H.), CRC, New York, 346-370, 2006.
- Nishii, R. and Eguchi, S.: Supervised image classification by contextual AdaBoost based on posteriors in neighborhoods, *IEEE Transactions on Geoscience and Remote Sensing*, 43(11), 2547-2554, 2005.
- Nishii, R. and Eguchi, S.: Robust supervised image classifiers by spatial AdaBoost based on robust loss functions., *Proceedings of SPIE*, 5982, 59820D, 2005.
- Nishimoto, Y., Takasaka, T., Hasegawa, M., Zheng, H. Y., Chen, Q., Sugimoto, C., Kitamura, T. and Yogo, Y.: Evolution of BK virus based on complete genome data, *Journal of Molecular Evolution*, 63, 341-352, 2006.
- Nishino, M. N., Fujimoto, M., Terasawa, T., Ueno, G., Maezawa, K., Mukai, T. and Saito, Y.: Geotail observations of temperature anisotropy of the two-component protons in the dusk plasma sheet, *Annales*

Geophysicae, 25, 769-777, 2007.

- Ogata, Y.: On an anomalous aftershock activity of the 2004 Niigata-ken-Chuetsu earthquake of M6.8, and intermediate-term seismicity anomalies preceding the rupture around the focal region (in Japanese), *Report of the Coordinating Committee for Earthquake Prediction*, Geographical Survey Institute, Tsukuba city, 73, 327-331, 2005.
- Ogata, Y.: On the aftershock activity of the 2004 earthquake of M7.4 at the southeast off the coast of the Kii Peninsula, and constraints on the fault-rupture models by the mechanisms and space-time pattern of the aftershocks (in Japanese), *Report of the Coordinating Committee for Earthquake Prediction*, Geographical Survey Institute, Tsukuba city, 73, 495-498, 2005.
- Ogata, Y.: Simultaneous estimation of b-values and detection rates of earthquakes for the application to aftershock probability forecasting (in Japanese), *Report of the Coordinating Committee for Earthquake Prediction*, Geographical Survey Institute, Tsukuba city, 73, 666-669, 2005.
- Ogata, Y.: Detection of anomalous seismicity as a stress change sensor, *Journal of Geophysical Research*, 110(B5), B05S06, doi:10.1029/2004JB003245, 2005.
- Ogata, Y.: Synchronous seismicity changes in and around the northern Japan preceding the 2003 Tokachi-oki earthquake of M8.0, *Journal of Geophysical Research*, 110(B8), B08305, doi:10.1029/2004JB003323, 2005.
- Ogata, Y.: Anomalies in the aftershock sequences of the 2003 Tokachi-Oki earthquake of M8.0 and the 2004 Kushiro-Oki earthquake of M7.1 and seismicity changes in the eastern Hokkaido inland (in Japanese), *Report of the Coordinating Committee for Earthquake Prediction*, Geographical Survey Institute, Tsukuba city, 74, 83-87, 2005.
- Ogata, Y.: Seismicity changes in and around Kyushu District before the 2005 earthquake of M7.0 in the western offshore of Fukuoka Prefecture (in Japanese), *Report of the Coordinating Committee for Earthquake Prediction*, Geographical Survey Institute, Tsukuba city, 74, 523-528, 2005.
- Ogata, Y.: Relative quiescence reported before the occurrence of the largest aftershock (M5.8) in the aftershocks of the 2005 earthquake of M7.0

- at the western Fukuoka, Kyushu, and possible scenarios of precursory slips considered for the stress-shadow covering the aftershock area (in Japanese), *Report of the Coordinating Committee for earthquake Prediction*, Geophysical Survey Institute, Tsukuba city, 74, 529-535, 2005.
- Ogata, Y.: Discussion on “Residual analysis for spatial point processes” by Baddeley, A., Turner, R., Möller, J. and Hazelton, M., *Journal of the Royal Statistical Society, Series B*, 67(5), 661, doi:10.1111/j.1467-9868.2005.00519.x, 2005.
- Ogata, Y.: Monitoring of anomaly in the aftershock sequence of the 2005 earthquake of M7.0 off coast of the western Fukuoka, Japan, by the ETAS model, *Geophysical Research Letters*, 33(1), L01303, doi:10.1029/2005GL024405, 2006.
- Ogata, Y. and Zhuang, J.: Space-time ETAS models and an improved extension, Special Issue on critical point theory and space-time pattern formation in precursory seismicity, in *Tectonophysics* (eds. Tiampo, K. and Anghel, M.), 413, 13-23, 2006.
- Ogata, Y.: Seismic activities in and around Tohoku District, northern Japan, prior to the 16th August 2005 interplate earthquake of M7.2 off the coast of Miyagi Prefecture, and the aftershock activity of the M7.2 earthquake (in Japanese), *Report of the Coordinating Committee for Earthquake Prediction*, Geographical Survey Institute, Tsukuba city, 75, 129-131, 2006.
- Ogata, Y.: Aftershock activities of recent conspicuous earthquakes in and near Japan (in Japanese), *Report of the Coordinating Committee for Earthquake Prediction*, Geographical Survey Institute, Tsukuba city, 75, 593-597, 2006.
- Ogata, Y.: On conspicuous aftershock activity relative to the background seismicity in the active regions (in Japanese), *Report of the Coordinating Committee for Earthquake Prediction*, Geographical Survey Institute, Tsukuba city, 75, 598-601, 2006.
- Ogata, Y. and Katsura, K.: Immediate and updated forecasting of aftershock hazard, *Geophysical Research Letters*, 33(10), L10305, doi:10.1029/2006GL025888, 2006.
- Ogata, Y.: Anomalies in the aftershock sequences of the 2003 Tokachi-Oki earthquake of M8.0 and the 2004 Kushiro-Oki earthquake of M7.1 and seismicity rate changes in the eastern Hokkaido inland (in Japanese), *Chikyu Monthly*, 28(7), 470-474, 2006.

- Ogata, Y.: Anomalies of aftershock activities in space and time measured by the Omori-Utsu formula and stress changes (in Japanese), *Report of the Coordinating Committee for Earthquake Prediction*, Geographical Survey Institute, Tsukuba city, 76, 590-597, 2006.
- Ogata, Y.: Seismicity anomaly scenario prior to the major recurrent earthquakes off the east coast of Miyagi Prefecture, northern Japan, *Tectonophysics*, 424, 291-306, doi:10.1016/j.tecto.2006.03.038, 2006.
- Ohara, K., Phu, C. N., Mogi, A., Motoda, H. and Washio, T.: Constructing decision tree based on Chunkingless graph-based induction, in *Mining Graph Data* (eds. Diane, J. Cook and Lawrence, B. Holder), Wiley-Interscience, A John Wiley & Sons, Inc., Publication, 2007.
- Ohnishi, T. and Yanagimoto, T.: Dual structure in the conjugate analysis of curved exponential families, in *Proceedings of Symposium of Research Institute of Mathematical Sciences Kyoto University*, 1439, 202-220, 2005.
- Ohtani, S., Ueno, G., Higuchi, T. and Kawano, H.: Annual and semiannual variations of the location and intensity of large-scale field-aligned currents, *Journal of Geophysical Research*, 110, A01216, doi:10.1029/2004JA010634, 2005.
- Ohtani, S., Ueno, G. and Higuchi, T.: Comparison of large-scale field-aligned currents under sunlit and dark ionospheric conditions, *Journal of Geophysical Research*, 110, A09230, doi:10.1029/2005JA011057, 2005.
- Oka, A., Aoto, T., Totsuka, Y., Takahashi, R., Ueda, M., Mita, A., Sakurai-Yamatani, N., Yamamoto, H., Kuriki, S., Takagi, N., Moriwaki, K. and Shiroishi, T.: Disruption of genetic interaction between two autosomal regions and the X chromosome causes reproductive isolation between mouse strains derived from different subspecies, *Genetics*, 175, Issue 1, 185-197, doi:10.1534/genetics.106.062976, 2007.
- Okabe, M. and Tanemura, M.: Bayesian estimation of soft-core potential models for spatial point patterns, *Journal of the Japan Statistical Society*, 36(2), 121-147, 2006.
- Ozima, M., Podosek, F. A., Higuchi, T., Yin, Q.-Z. and Yamada, A.: On the mean oxygen isotope composition of the solar system, *ICARUS*, 186, 562-570, 2007.
- Park, B. Uk., Lee, Y. K., Kim, T. Y., Park, C. and Eguchi, S.: Local likelihood density estimation when the bandwidth is large, *Journal of Statistical Planning and Inference*, 136, 839-859, 2005.

- Peng, H., Tamura, Y., Gui, W. and Ozaki, T.: Modeling and asset allocation for financial markets based on a stochastic volatility microstructure model, *International Journal of Systems Science*, 36(6), 315-327, 2005.
- Peterson, S. A., Van, S. J., Hughes, R. M., Schacher, J. A. and Echols, S. F.: A biopsy procedure for determining filet and predicting whole-fish mercury concentration, *Arch. Environ. Contam. Toxicol.*, 48, 99-107, 2005.
- Riera, J., Aubert, E., Iwata, K., Kawashima, R., Wan X. and Ozaki, T.: Fusing EEG and fMRI based on a bottom-up model: inferring activation and effective connectivity in neural masses, *Phil. Trans. of Royal Society, Biological Sciences* (ed. Riera, J.), 360(1457), 1025-1041, 2005.
- Saitoh, K., Kodama, H., Sera, K., Yoshimura, K. and Nagafuchi, O.: Chemical components in rime on Mt. Moriyoshi in Northern Japan, *International Journal of Pixe*, 15(3&4), 211-219, 2005.
- Sakaguchi, M., Nakayama, T., Hashimoto, T. and Inouye, I.: Phylogeny of the Centrohelida inferred from SSUrRNA, tubulins, and actin genes, *Journal of Molecular Evolution*, 61, 765-775, 2005.
- Sakamoto, K., Yamamura, M. and Someya, H.: Toward “wet” implementation of genetic algorithm for protein engineering, in *Lecture Notes in Computer Science* (eds. Ferretti, C., Mauri, G. and Zandron, C.), Springer Verlag, 3384, 308-318, 2005.
- Sakamoto, Y.: A statistical research on the Japanese national character: General trends in attitude over the past fifty years (in Japanese), *Proceedings of the Institute of Statistical Mathematics*, 53(1), 3-33, 2005.
- Sasaki, T., Nikaido, M., Hamilton, H., Goto, M., Kato, H., Kanda, N., Pastene, L. A., Cao, Y., Fordyce, R. E., Hasegawa, M. and Okada, N.: Mitochondrial phylogenetics and evolution of Mysticete whales, *Systematic Biology*, 54, 77-90, 2005.
- Sasaki, T., Nikaido, M., Wada, S., Yamada, T. K., Cao, Y., Hasegawa, M. and Okada, N.: *Balaenoptera omurai* is a newly discovered baleen whale that represents an ancient evolutionary lineage, *Mol. Phylogenet. Evol.*, 41, 40-52, 2006.
- Sato, S. and Takahashi, A.: Estimating interest rates model by using Monte Carlo filter (in Japanese), Computational Statistics II –Markov Chain Monte Carlo Methods and related topics, in *Frontiers of*

- Statistical Sciences* (eds. Amari, S., Takeuchi, K., Takemura, A. and Iba, Y.), Iwanami Publishing Co., Tokyo, 12, 327-353, 2005.
- Sato, T., Higuchi, T. and Kitagawa, G.: Statistical inference using stochastic switching models for the discrimination of unobserved non-price promotion (in Japanese), *Transactions of the Japan Society for Industrial and Applied Mathematics*, 15(4), 537-570, 2005.
- Sato, T. and Higuchi, T.: Knowledge discovery from POS data using state space models: an analysis of change in price elasticities by new product's entry to market (in Japanese), *Transaction of the Japanese Society for Artificial Intelligence*, 22(2), 200-208, 2007.
- Senecal, S., Doucet, A. and Matsui, T.: Space alternating data augmentation: Application to finite mixture of gaussians and speaker recognition, in *Proc. ICASSP*, IV-713-716, 2005.
- Shimamura, T. and Mizuta, M.: Flexible regression modeling via radial basis function networks and lasso-type estimator, *Neural Network world*, 15(4), 367-374, 2005.
- Shimatani, K., Kitamura, K., Kanazashi, T. and Sugita, H.: Genetic inhomogeneous Poisson processes describing the roles of an isolated mature tree in forest regeneration, *Population Ecology*, 48, 203-214, 2006.
- Shimizu, K.: *Insurance Risk Models: Calculating Claims Distributions* (in Japanese), Kyoritsu Shuppan Co., Ltd, Tokyo, 2006.
- Shimizu, K., Ito, S. and Suzuki, S.: Tracking control of general nonlinear systems by a direct gradient descent method, *Nonlinear Dynamics and Systems Theory*, 5(1), 91-105, 2005.
- Shimizu, K., Adachi, J. and Muraoka, Y.: ANGLE: a sequencing errors resistant program for predicting protein coding regions in unfinished cDNA, *Journal of Bioinformatics and Computational Biology*, 4(3), 649-664, 2006.
- Shimizu, S., Hoyer, P. O., Hyvärinen, A. and Kerminen, A.: A linear non-gaussian acyclic model for causal discovery, *J. of Machine Learning Research*, 7, 2003-2030, 2006.
- Shimodaira, H. and Hasegawa, M.: Assessing the uncertainty in phylogenetic inference, in *Statistical Methods in Molecular Evolution* (ed. Nielsen, R.), Springer, 463-493, 2005.
- Shimura, T. and Watanabe, T.: Infinite divisibility and generalized subexponentiality, *Bernoulli*, 11(3), 445-469, 2005.
- Shingu, Y., Kudo, T., Ohsato, S., Kimura, M., Ono, Y., Yamaguchi, I. and Hamamoto, H.: Characterization of genes encoding metal tolerance

- proteins isolated from *Nicotiana glauca* and *Nicotiana tabacum*, *Biochemical and Biophysical Research Communications*, 331, 675-680, 2005.
- Singh, S. S., Johansen, A., Doucet, A. and Vo, B.: A central limit theorem for a sequential Monte Carlo implementation of the PHD filter, *Methodology and Computing in Applied Probability*, 8(2), 265-291, 2006.
- Singh, S. S., Tadic, V. B. and Doucet, A.: Policy gradient for semi-Markov processes with applications to call admission control, *Europ. J. Operation Research*, 178(3), 808-818, 2007.
- Someya, H. and Yamamura, M.: A robust real-coded evolutionary algorithm with toroidal search space conversion, *Soft Computing*, 9(4), 254-269, 2005.
- Stein, R., Toda, S., Parsons, T. and Grunewald, E.: A new probabilistic seismic hazard assessment for greater Tokyo, *Proceedings of the Royal Society A –Mathematical Physical and Engineering Science*, doi:10.1098/rsta.2006.1808, 2006.
- Suenaga, A., Kiyatkin, A. B., Hatakeyama, M., Futatsugi, N., Okimoto, N., Hirano, Y., Narumi, T., Kawai, A., Susukita, R., Koishi, T., Furusawa, H., Yasuoka, K., Takada, N., Ohno, Y., Taiji, M., Ebisuzaki, T., Hoek, J. B., Konagaya, A. and Kholodenko, B. N.: Novel mechanism of interaction of p85 subunit of phosphatidylinositol 3-kinase and ErbB3 receptor-derived phosphotyrosyl peptides, *Journal of Biological Chemistry*, 280, 1321, 2005.
- Suetani, H., Iba, Y. and Aihara, K.: Detecting generalized synchronization between chaotic signals: a kernel-based approach, *Journal of Physics A: Mathematical and General*, 39, 10723-10742, doi:10.1088/0305-4470/39/34/009, 2006.
- Sugimoto, Teruhisa and Ogawa, T.: Systematic study of convex pentagonal tilings, I : Case of convex pentagons with four equal-length edges, *Forma*, 20(1), 1-18, 2005.
- Sugimoto, Teruhisa and Ogawa, T.: Systematic study of tessellating convex pentagons and their tiling patterns, IV; Convex pentagons with four edges of the equal length. 4: Tilings without vertical concentration conditions, and equilateral pentagonal cases (in Japanese), *Bulletin of the Society for Science on Form*, 21(1), 1-12, 2006.
- Sugimoto, Teruhisa and Ogawa, T.: Properties of tilings by convex pentagons, *Forma*, 21(2), 113-128, 2006.

- Sugimoto, Teruhisa and Tanemura, M.: Packing and Minkowski covering of congruent spherical caps on a sphere for $N = 2, \dots, 9$, *Forma*, 21(3), 197-225, 2007.
- Sugimoto, Tomoyuki and Hamasaki, T.: Properties of estimators for baseline hazard functions in a semiparametric cure model, *Annals of the Institute of Statistical Mathematics*, 58(4), 647-674, 2006.
- Suzuki, T., Hashimoto, T., Yabu, Y., Majiwa, P. A. O., Ohshima, S., Suzuki, M., Lu, S. and Hato, M.: Alternative oxidase (AOX) genes of African trypanosomes: Phylogeny and evolution of AOX and plastid terminal oxidase families, *Journal of Eukaryotic Microbiology*, 52, 374-381, 2005.
- Suzuki, T., Yamaguchi, A., Ibaraki, T., Ohno, K., Murayama, H., Shibuya, N., Hashimoto, S. and Kashiwagi, N.: Study on the estimation of source contribution to PCDD/Fs using chemical mass balance method based on functional relationship analysis (in Japanese), *Journal of Environmental Chemistry*, 16, 437-448, 2006.
- Tainaka, K., Itoh, Y., Yoshimura, J. and Asami, T.: A geographical model of high species diversity, *Population Ecology*, 48, 113-119, 2006.
- Takanashi, H., Kosaka, M., Kajiya, H., Ohyama, K., Nakajima, T. and Ohki, A.: Mutagen formation potential of agricultural chemicals (in Japanese), *Journal of Water and Waste*, 48(2), 149-154, 2006.
- Takemura, A. and Aoki, S.: Distance-reducing Markov bases for sampling from a discrete sample space, *Bernoulli*, 11(5), 793-813, 2005.
- Takenouchi, T., Ushijima, M. and Eguchi, S.: GroupAdaBoost for selecting important genes, in *IEEE 5th Symposium on Bioinformatics and Bioengineering*, 218-221, 2005.
- Takeuchi, K. and Kumon, M.: *Probability and Finance It's Only a Game* (translation) (in Japanese), Iwanami Shoten, Publishers, Tokyo, 2006.
- Takizawa, Y., Tjitrostwarno, C. B. and Fukasawa, A.: A mathematical scheme of multi-user receiver in W-CDMA mobile communication based on the conjugate gradient method, *WSEAS Transactions on Signal Processing*, 2(1), 244-248, 2005.
- Tamada, Y., Imoto, S. and Miyano, S.: Utilizing heterogeneous genomic data to estimate gene networks (in Japanese), *Proceedings of the Institute of Statistical Mathematics*, 54(2), 333-356, 2006.
- Tamura, Y., Onodera, T., Nakahata, M. and Shimizu, T.: On physical random number generators in Japan (in Japanese), *Journal of the Japan Statistical Society*, 35(2), 201-212, 2006.

- Tanaka, K., Kitamoto, N., Shimatani, K. and Goto, S.: Roles of genetic markers on pollen dispersal study in plants (in Japanese), *Japanese Journal of Ecology*, 56, 134-144, 2006.
- Tanemura, M.: Statistical distributions of the shape of Poisson Voronoi cells, in *Voronoi's Impact on Modern Science* (eds. Syta, H. and Yurachkivsky, A.), Institute of Mathematics of National Academy of Ukraine, Kyiv, Ukraine, Book 3, 193-202, 2005.
- Tanemura, M.: Statistical distributions of Poisson Voronoi cells in 4-D and 5-D Euclidean Spaces, in *Proceedings of the 2nd International Symposium on Voronoi Diagrams in Science and Engineering* (ed. Voronoi Diagram Research Center, Hanyang University, Seoul, Korea), 74-81, 2005.
- Tanemura, M.: Applications of Markov Chain Monte Carlo methods to spatial statistics (in Japanese), Computational Statistics II –Markov Chain Monte Carlo Methods and related topics, in *Frontiers of Statistical Sciences* (eds. Amari, S., Takeuchi, K., Takemura, A. and Iba, Y.), Iwanami Publishing Co., Tokyo, 12, 107-152, 2005.
- Tani, S., Tjitrosoewarno, C. B., Sugihara, H., Fukasawa, A. and Takizawa, Y.: Enhancement of the W-CDMA scheme based on parallel matched filters, *WSEAS Transactions on Communications*, 5(4), 211-215, 2005.
- Tanokura, Y.: Detection of the international sector comovements (in Japanese), in *JAFEE Journal 2006 –Kin-yu kogaku to shoken sijo no keiryo bunseki* (eds. Ikeda, M. and Tsuda, H.), Toyokeizai sinposha, 155-178, 2006.
- Tasaki, S., Nagasaki, M., Oyama, M., Hata, H., Ueno, K., Yoshida, R., Higuchi, T., Sugano, S. and Miyano, S.: Modeling and estimation of dynamic EGFR pathway by data assimilation approach using time series proteomic data, in *Proceedings of Genome Informatics 2006* (eds. Sakakibara, Y., Smith, T. F., Kanehisa, M., Miyano, S. and Takagi, T.), 17(2), 226-238, 2006.
- Termier, A., Tamada, Y., Imoto, S., Washio, T. and Higuchi, T.: From closed tree mining towards closed DAG mining, in *The International Workshop on Data Mining and Statistical Science, Sapporo, Japan*, 1-7, 2006.
- Toda, S., Stein, R. S., Richards-Dinger, K. and Bozkurt, S.: Forecasting the evolution of seismicity in southern California: Animations built on earthquake stress transfer, *Journal of Geophysical Research*, 110,

- B05, S16 doi:10.1029/2004JB003415, 2005.
- Toda, S. and Matsumura, S.: Spatio-temporal stress states estimated from seismicity rate changes in the Tokai region, central Japan, *Tectonophysics*, 417, doi:10.1016/j.tectono.2005.08.030, 2006.
- Toyoda, Y., Ozaki, T. and Nakano, K.: Application of nonlinear model-based predictive control method to the SCR control system for NOx reduction of combined cycle power plant, *Measurement and Control*, 45(10), 2006.
- Tsuchiya, Takahiro: Domain estimators for the item count technique, *Survey Methodology*, 31(1), 41-51, 2005.
- Tsuchiya, Takahiro: Length of interview and response effects in telephone surveys (in Japanese), *Proceedings of the Institute of Statistical Mathematics*, 53(1), 83-101, 2005.
- Tsuchiya, Takahiro: A study of the characteristics of nonrespondents –A postsurvey of the reasons for cooperation to the eleventh nationwide survey on the Japanese national character– (in Japanese), *Proceedings of the Institute of Statistical Mathematics*, 53(1), 35-56, 2005.
- Tsuchiya, Takashi and Sasakawa, T.: Robust optimization of magnetic shielding with second-order cone programming (in Japanese), *Proceedings of the Institute of Statistical Mathematics*, 53(2), 297-315, 2005.
- Tsuchiya, Takashi: Layered least squares method –limit of weighted least squared method– (in Japanese), *Proceedings of the Institute of Statistical Mathematics*, 53(2), 391-404, 2005.
- Tsuchiya, Takashi (editor): Special issue: Computational Modeling and Inference (in Japanese), *Proceedings of the Institute of Statistical Mathematics*, 53(2), 2005.
- Tsuchiya, Takashi and Xia, Y.: An extension of the standard polynomial-time primal-dual path-following algorithm to the weighted determinant maximization problem with semidefinite constraints, *Pacific Journal of Optimization*, 3, 165-182, 2007.
- Tsuda, H.: Estimation of credit risk information via a corporate bond pricing model (in Japanese), in *JAFEE Journal*, 33-63, 2006.
- Tsuda, H.: Information of corporate bonds ratings via a bond pricing model (in Japanese), *Proceedings of the Institute of Statistical Mathematics*, 54(1), 39-55, 2006.
- Tsuda, Y.: Bhattacharyya inequality for quantum state estimation, *Journal of Physics A: Mathematical and Theoretical*, 40(4), 793-810,

doi:10.1088/1751-8113/40/4/015, 2007.

- Tsuruoka, Y., Tamura, T., Shibasaki, R. and Tsuruoka, M.: Analysis of walking improvement with dynamic shoe insoles, using two accelerometers, *Physica A*, 352, 645-658, 2005.
- Ueda, S., Makino, K. and Itoh, Y.: Reconstructing family trees in ancient population from Nuzi personal names (in Japanese), *Proceedings of the Institute of Statistical Mathematics*, 53(2), 285-295, 2005.
- Ueno, G., Higuchi, T., Kagimoto, T. and Hirose, N.: Prediction of ocean state by data assimilation with the ensemble Kalman filter, in *Proceedings of Joint 3rd International Conference on Soft Computing and Intelligent Systems and 7th International Symposium on advanced Intelligent Systems (SCIS & ISIS 2006)*, 1884-1889, 2006.
- Ueno, G., Higuchi, T., Kagimoto, T. and Hirose, N.: Application of the ensemble Kalman filter to atmosphere-ocean coupled model, in *Proceedings of Nonlinear Statistical Signal Processing Workshop 2006(NSSPW)*, Cambridge, UK, 2006.
- Ueno, G., Higuchi, T., Kagimoto, T. and Hirose, N.: Application of the ensemble Kalman filter and smoother to a coupled atmosphere-ocean model, *Scientific Online Letters on the Atmosphere*, 3, 5-8, 2007.
- Ulyanov, V., Wakaki, H. and Fujikoshi, Y.: Berry-Esseen bound for high dimensional asymptotic approximation of Wilks' lambda distribution, *Statistics & Probability Letters*, 76, 1191-1200, 2006.
- Usui, N., Tsujino, H., Fujii, Y. and Kamachi, M.: Short-range prediction experiments of the Kuroshio path variabilities south of Japan, *Ocean Dynamics*, 56, 607-623, doi:10.1007/s10236-006-0084-z, 2006.
- Usui, Y., Fujii, Y., Ishizaki, S., Tsujino, H., Yasuda, T. and Kamachi, M.: Introduction of the Meteorological Research Institute Multi-variate Ocean Variational Estimation System (MOVE-System), *Journal of Advanced Space Research*, 37, 806-822, 2006.
- Utiyama, M., Suga, S., Matsumoto, Y. and Fukuyama, T.: Aerosol dynamics in an urban area observed by multipoint measurement (in Japanese), *Earozoru Kenkyu*, 21(4), 322-327, 2006.
- Wakaki, H.: Edgeworth expansion of Wilks' lambda statistic, *J. Multivariate Analysis*, 97(9), 1958-1964, 2006.
- Wakaki, T., Itakura, H., Tamura, M., Motoda, H. and Washio, T.: A study on rough set-aided feature selection for automatic web-page classification, *WIAS Journal*, 4(4), 431-441, 2006.

- Wakaura, M.: The theory and methodology of weather derivatives pricing (in Japanese), *Japanese Journal of Risk and Insurance*, 1, 21-39, 2005.
- Wakaura, M.: Seasonal autocorrelation structure in air temperature processes and weather derivatives (in Japanese), *Japanese Journal of Risk and Insurance*, 2, 3-19, 2006.
- Washio, T., Sakurai, A., Nakajima, K., Takeda, H., Tojo, S. and Yokoo, M.: *New Frontiers in Artificial Intelligence: Proceedings of the 19th Annual Conferences of the Japanese Society for Artificial Intelligence*, Springer-Verlag, LNAI 4012, 2006.
- Washio, T., Higuchi, T., Imoto, S., Tamada, Y., Sato, K. and Motoda, H.: Graph mining and its application to statistical modeling (in Japanese), *Proceedings of the Institute of Statistical Mathematics*, 54(2), 315-331, 2006.
- Washio, T., Nakanishi, K., Motoda, H. and Okada, T.: Mutagenicity risk analysis by using class association rules, in *JSAI 2005 Workshops* (ed. Washio, T.), Springer-Verlag, LNAI 4012, 436-445, 2006.
- Washio, T., Satoh, K., Takeda, H. and Inokuchi, A.: *New Frontiers in Artificial Intelligence*, Springer, LNAI 4384, 2007.
- Watanabe, M., Nikaido, M., Tsuda, T. T., Kobayashi, T., Mindell, D., Cao, Y., Okada, N. and Hasegawa, M.: New candidate species most closely related to penguins, *Gene*, 378, 65-73, 2006.
- Watanabe, Sumio., Hagiwara, K., Motomura, Y., Akaho, S., Fukumizu, K., Okada, M. and Aoyagi, M.: *Theory and Realization of Learning Systems* (in Japanese), Morikita Shuppan Co., Ltd., Tokyo, 2005.
- Watanabe, Shin-ichi and Kobayashi, H.: Studies of ecological variation in the Iriomote cat adapted to a subtropical island (in Japanese), *Mammalian Science*, 46, 213-214, 2006.
- Watanabe, Shin-ichi and Kobayashi, H.: Sound recording of vocal activity of animals inhabiting subtropical forest on Iriomote Island in the southern Ryukyus, Japan, *Advances in Bioacoustics*, 2, 213-228, 2006.
- Wong, K. F. K., Galka, A., Yamashita, O. and Ozaki, T.: Modelling non-stationary variance in EEG time series by state space GARCH model, *Computers in Biology and Medicine*, 36, 1327-1335, 2006.
- Yafune, A., Narukawa, M. and Ishiguro, M.: A note on sample size determination for Akaike Information Criterion(AIC) approach to clinical data analysis, *Communication in Statistics –Theory and Methods*,

- 34, 2331-2344, 2005.
- Yafune, A., Funatogawa, T. and Ishiguro, M.: Extended Information Criterion (EIC) approach for linear mixed effects models under restricted maximum likelihood(REML) estimation, *Statistics in Medicine*, 24, 3417-3429, 2005.
- Yamaguchi, R., Yamashita, S. and Higuchi, T.: Estimating gene networks with cDNA microarray data using state-space models, in *2005 International Workshop on Data Mining and Bioinformatics, Lecture Notes in Computer Science*, Springer, 3482, 381-388, 2005.
- Yamaguchi, R. and Higuchi, T.: State-space approach with the maximum likelihood principle to identify the system-generating time course gene expression data of yeast, *International Journal of Data Mining and Bioinformatics*, 1(1), 77-87, 2006.
- Yamaguchi, R., Yoshida, R., Imoto, S., Higuchi, T. and Miyano, S.: Finding module-based gene networks in time-course gene expression data with state space models, *IEEE Signal Processing Magazine*, Special Issue on Signal Processing Methods in Genomics and Proteomics, 24(1), 37-46, 2007.
- Yamamoto, T., Kikuchi, H. and Nakamura, T.: Classification of changes in sports and recreational activities based on age-period-cohort analyses of participation rates (in Japanese), *Journal of Japan Society of Sports Industry*, 16(1), 25-42, 2006.
- Yamashita, O., Sadato, N., Okada, T. and Ozaki, T.: Evaluating frequency-wise directed connectivity of BOLD signals applying relative power contribution with the linear multivariate time series models, *Neuroimage*, 25, 478-490, 2005.
- Yamashita, S.: The harshness intercomparison of credit risk models (in Japanese), *FSA Research Review*, 2005.
- Yamashita, S. and Ando, T.: Measuring method for hazard term structure based on hazard model with time varying covariates (in Japanese), *Proceedings of the Institute of Statistical Mathematics*, 52(1), 23-38, 2006.
- Yamashita, T. and Itoh, Y.: The oscillation of stock price by majority orienting traders with investment position, *Physica A*, 374, 764-772, 2007.
- Ye, X. and Ohnishi, T.: Empirical Bayes estimation in von Mises distribution (in Japanese), *Proceedings of the Institute of Statistical Mathematics*, 54(1), 177-190, 2006.
- Yin, X.-C., Zhang, L.-P., Zhang, H.-H., Yin, C., Wang, Y., Zhang, Y., Peng,

- K., Wang, H., Song, Z., Yu, H. and Zhuang, J.: LURR's twenty years and its perspective, *Pure and Applied Geophysics*, 163, 2317-2341, doi:10.1007/s00024-006-0135-x, 2006.
- Yoshida, R., Imoto, S. and Higuchi, T.: A penalized likelihood estimation on transcriptional module-based clustering, in *2005 International Workshop on Data Mining and Bioinformatics, Lecture Notes in Computer Science*, Springer, 3482, 389-401, 2005.
- Yoshida, R., Imoto, S. and Higuchi, T.: Estimating time-dependent gene networks from time series microarray data by dynamic linear models with Markov switching, in *Proceedings of Computational Systems Bioinformatics Conference(CSB2005)*, IEEE Computer Society, 289-298, 2005.
- Yoshida, R., Higuchi, T., Imoto, S. and Miyano, S.: ArrayCluster: An analytic tool for clustering, data visualization, *Module Finder on Gene Expression Profiles*, 22, 1538-1539, 2006.
- Yoshino, R.: East Asia value survey –for the development of behaviormetric study of civilization on the cultural manifold analysis (CULMAN) – (in Japanese), *The Japanese Journal of Behaviormetrics*, 32(2), 133-146, 2005.
- Yoshino, R.: A time to trust in the East Asia –a behaviormetric study on the sense of trust in East Asia value survey– (in Japanese), *The Japanese Journal of Behaviormetrics*, 32(2), 147-160, 2005.
- Yoshino, R.: A social value survey of China –on the change and stability in the Chinese globalization–, *Behaviormetrika*, 33-2, 111-130, 2006.
- Yoshino, R.: *The East Asia Value Survey* (in Japanese), Ministry of Education, Sports, Science & Technology, 2006.
- Yoshino, R.: *The Asia-Pacific Value Survey –China 2005 Survey* (in Japanese), ISM, Tokyo, 1-527, 2007.
- Zhang, Y., Zheng, N., Hao, P., Cao, Y. and Zhong Y.: A molecular docking model of SARS-CoV S1 protein in complex with its receptor, human ACE2, *Computational Biology and Chemistry*, 29, 254-257, 2005.
- Zheng, H. Y., Nishimoto, Y., Chen, Q., Hasegawa, M., Zhong, S., Ikegaya, H., Ohno, N., Sugimoto, C., Takasaka, T., Kitamura, T. and Yogo, Y.: Relationships between BK virus lineages and human populations, *Microbes and Infection*, 9, 204-213, 2007.
- Zheng, Y.(editor): Research on the National Character of Chinese and Japanese –Sampling Surveys in Hangzhou and Kunming, China, *RIHN Research Report*, Research Institute for Humanity and

- Nature, 1, 2005.
- Zheng, Y.: Social transition of traditional values –Cross-national comparison in east Asian countries– (in Japanese), *Journal of F-GENS*, 3, 140-154, 2005.
- Zheng, Y.: Cross-national comparison of transitions of traditional values in east Asian people (in Japanese), *The Japanese Journal of Behaviormetrics*, 32(2), 161-172, 2005.
- Zheng, Y., Yoshino, R. and Murakami, M.: An analysis on attitudes toward nature and environment in east Asia –Main factors in formation of environmental consciousness– (in Japanese), *The Japanese Journal of Behaviormetrics*, 33(1), 57-70, 2006.
- Zheng, Z. Y., Iwata, H., Ninomiya, S. and Tamura, Y.: Quantitative evaluation of partial shape characteristics of petal in sacred lotus based on P-type Fourier descriptors (in Japanese), *Breeding Research*, 7, 133-142, 2005.
- Zheng, Z. Y. and Tamura, Y.: Cultivar identification of lotus(*Nelumbo nucifera* Gaertn) by P-type Fourier descriptors (in Japanese), *Horticultural Research*, 4(4), 385-390, 2005.
- Zhuang, J.: Discussion on “Residual analysis for spatial point processes” by Baddeley A., Turner R., Möller J. and Hazelton M., *Journal of the Royal Statistical Society, Series B*, 67(5), 656-657, doi:10.1111/j.1467-9868.2005.00519.x., 2005.
- Zhuang, J., Ogata, Y. and Vere-Jones, D.: Diagnostic analysis of space-time branching processes for earthquakes, *Springer Lecture Note in Statistics: Case Studies in Spatial Point Process Models*, Chap. 15 (eds. Baddeley, A., Gregori, P., Mateu, J., Stoica, R. and Stoyan, D.), Springer-Verlag, New York, 185, 275-290, 2005.
- Zhuang, J., Chang, C., Ogata, Y. and Chen, Y.: A study on the background and clustering seismicity in the Taiwan region by using point process models, *Journal of Geophysical Research*, 110, B5, B05S18, doi:10.1029/2004JB003157, 2005.
- Zhuang, J., Vere-Jones, D., Guan, H., Ogata, Y. and Ma, L.: Preliminary analysis of observations on the ultra-low frequency electric field in the Beijing region, *Pure and Applied Geophysics*, 162, 1367-1396, doi:10.1007/s00024-004-2659-2, 2005.
- Zhuang, J.: Second-order residual analysis of spatiotemporal point processes and applications in model evaluation, *Journal of the Royal Statistical Society, Series B (Statistical Methodology)*, 68(4), 635-653. doi:

10.1111/j.1467-9868.2006.00559.x, 2006.

Zhuang, J. and Ogata, Y.: Properties of the probability distribution associated with the largest event in an earthquake cluster and their implications to foreshocks, *Physical Review*, E, 73, 046134, doi: 10.1103/PhysRevE.73.046134, 2006.

Tutorial Programs and Consultation

Tutorial courses on statistical science are held 13-15 times a year for the benefit of researchers, students, and the general public. The first course is presented at a beginner's level and the others at an advanced level. Those offered during January 2005-March 2007 are as follows:

— *in 2005* —

- Introduction to Statistics
- A Junction of Informatics –Chordal Graph and its Applications–
- Analysis of Qualitative Data by Quantification Methods
- Nonlinear Time Series Analysis of Financial Data
- Introductory Data Analysis with R
- Data Processing and LSI Design for Information and Telecommunications with the Latest Technologies
- Introduction to Sampling Methods and Sampling Surveys
- Introduction to Reliability Theory and Survival Data Analysis with R
- Theory and Practice Inferring Molecular Phylogenies
- Introduction to Probabilistic Evaluation of Risk
- Non-Poisson Regression Models for Count Data
- Packing and Random Packing
- Introduction to Time Series Analysis

— *in 2006* —

- A Course on Time Series Analysis for Economics and Finance
- Advances in Kernel Methods: SVM, Nonlinear Data Analysis, and Structured Data
- Basic Medical Statistics using R
- Introduction to Statistics
- Lectures on Information Theory and Mobile Telecommunication Technologies –Systems and Hardwares for Large-Scale Data Processing–

- International Standardization of Statistical Methods –Precision and Trueness of Measurement Methods and Results–Capability of Detection
- A New Trend of Adaptive and Learning Control Theory
- A Game Theoretic Approach to Mathematical Finance
- Introduction to Quantitative Methods for Social Sciences
- Statistical Pattern Recognition
- Introduction to Statistical Data Analysis
- Statistical Mathematics of Rock-Scissors-Paper Game
- An Introduction to Statistical Analysis Based on the Theory of Martingales
- Introduction to Risk Analysis with R –Application of Tree-based and Nonparametric Modelling–
- Introduction to Survey Data Analysis using R

In addition, once or twice a year the Institute holds a special lecture to inform the public of various topics that have emerged out of research and study.

The Institute also endeavours, chiefly through the Center for Engineering and Technical Support, to acquaint the public with the statistical methodology developed in the course of research, and to offer services for consultancy.

The Institute accepts graduate students, technicians, and researchers from universities and private institutions for non-degree programs of continuing education. Since 1989 the Institute has accepted students for education and research in doctoral programs.

In 2006, the Institute adopted a five-year system, offering either a five-year education and research program, or a three-year education and research program starting from the third year of study.

Software Products

The creation of new theories and new methods of analysis generally accompany testing procedures, which are often fulfilled through complicated calculations run by elaborate computer programs. The Institute believes that programs and software completed in the course of research should be delivered as quickly as possible to the relevant fields of science and business. Therefore the Center for Engineering and Technical Support is engaged in cataloguing and storing in a library the software products developed at the Institute. Detailed information on the library, named ISMLIB, is available through: kks@ism.ac.jp (e-mail), +81-3-5421-8796 (facsimile), <http://www.ism.ac.jp/> (URL). Some programs in the library can be downloaded from the Internet site. The following is a partial list of programs developed in the Institute. Most of the programs are coded in Fortran, C, C++, Java, S and R.

<p>TIMSAC $\left(\begin{array}{l} \textit{TiMe Series} \\ \textit{Analysis and} \\ \textit{Control} \end{array} \right)$</p>	<p>— <i>Main features</i> — Package of programs for analysis, prediction and control of time series.</p> <p>— <i>Typical examples of application</i> —</p> <ul style="list-style-type: none"> • Analysis of channel records of brain wave • Analysis of economic data • Optimal control of plants • Implementation of ship's autopilot • Analysis of seismological data
<p>BAYSEA $\left(\begin{array}{l} \textit{BAYesian} \\ \textit{SEasonal} \\ \textit{Adjustment} \end{array} \right)$</p>	<p>— <i>Main features</i> — Computer program for realizing a decomposition of a time series into trend, seasonal and irregular components.</p> <p>— <i>Typical examples of application</i> —</p> <ul style="list-style-type: none"> • Seasonal adjustment of economic time series

<p>CATDAP <i>(CATegorical Data Analysis)</i> and CATDAP for Windows</p>	<p>— <i>Main features</i> — A program for the selection of variables that explain well the structure of categorical data.</p> <p>— <i>Typical examples of application</i> —</p> <ul style="list-style-type: none"> • Analysis of multi-dimensional contingency tables
<p>NOLLS1 <i>(NonLinear Least Square method 1)</i></p>	<p>— <i>Main features</i> — A program for nonlinear least square methods.</p> <p>— <i>Typical examples of application</i> —</p> <ul style="list-style-type: none"> • Analysis of materials for a nuclear reactor • Design of plats • Pharmacokinetics for a new drug • Analysis of the respiratory organ by using sonic echo • Spectrum analysis in X-ray spectroscopy
<p>QUANT <i>(QUANTifi- cation theory)</i></p>	<p>— <i>Main features</i> — Programs for the quantification theories of type I, II, III.</p> <p>— <i>Typical examples of application</i> —</p> <ul style="list-style-type: none"> • Survey of behavior of the younger generation • Analysis of clinical data • Prediction of elections • Effect of advertisement • Data analysis in educational psychology
<p>DALL <i>(DAvidon's algorithm for Log Likeli- hood maxi- mization)</i></p>	<p>— <i>Main features</i> — Davidon's variance algorithm subroutine customized for maximum likelihood.</p> <p>— <i>Typical examples of application</i> —</p> <ul style="list-style-type: none"> • Analysis of medical data • Analysis of multi-dimensional non-stationary data

<p>ARdock <i>(dock for AR models)</i></p>	<p>— <i>Main features</i> — A dialogue system for system analysis.</p> <p>— <i>Typical examples of application</i> —</p> <ul style="list-style-type: none"> • Analysis of industrial plants • System analysis • Analysis of chemical processes in human bodies
<p>STATS <i>(State-space Analysis of Time series)</i></p>	<p>— <i>Main features</i> — Programs for time series with various characteristics (non-stationarity, non-Gauss, non-linearity, missing values and outliers, etc.) with the aid of state space models.</p> <p>— <i>Typical examples of application</i> —</p> <ul style="list-style-type: none"> • Seasonal adjustment of economic data • Interpolation of missing values • Estimation of non-stationary spectrum • Non-Gaussian smoothing
<p>TIMSAC for Windows</p>	<p>— <i>Main features</i> — TIMSAC programs implemented on MS-Windows.</p> <p>— <i>Typical examples of application</i> —</p> <ul style="list-style-type: none"> • Analysis of brain wave • Prediction of sales • Prediction of stock price • Analysis of seismological data
<p>DLL and Shared Libraries of TIMSAC</p>	<p>— <i>Main features</i> — TIMSAC programs implemented on MS-Windows.</p> <p>— <i>Typical examples of application</i> —</p> <ul style="list-style-type: none"> • Analysis of brain wave • Prediction of sales • Prediction of stock price • Analysis of seismological data

<p>DECOMP, WebDECOMP, eDECOMP</p>	<p>— <i>Main features</i> — A program of TIMSAC84 for time series decomposition (seasonal adjustment) . WebDECOMP can be used through our Webpage and eDECOMP is an add-in software for Excel.</p> <p>— <i>Typical examples of application</i> — • Seasonal adjustment</p>
<p>Jasp <i>(Java based Statistical Processor)</i></p>	<p>— <i>Main features</i> — An experimental statistical analysis system written in Java language.</p> <p>— <i>Typical examples of application</i> — • Explanatory data analysis • Developing new computational statistical methodology</p>
<p>Jasplot <i>(Java statistical plot)</i></p>	<p>— <i>Main features</i> — Statistical graphics library in Java language.</p> <p>— <i>Typical examples of application</i> — Data visualization</p>



(Machine room-1)



(Machine room-2)

*Introduction to the Department of Statistical Science,
School of Multidisciplinary Sciences,
The Graduate University for Advanced Studies*

“In Japan, inter-university research institutes have been established in various research fields as centers of advanced studies and large-scale joint researches since 1971 when National Laboratory for High Energy Physics was built as the first one. A novel idea of applying the excellent academic staff and facilities of inter-university research institutes to postgraduate education had been extensively discussed since 1982. Consequently it was decided to establish the Graduate University for Advanced Studies as a new postgraduate education system operated under close contact and tight cooperation with inter-university research institutes (“parent institutes”). The main purposes of the University are to cultivate young scientists of rich originality backed with wider vision and an international sense and also to promote fundamental research in the direction of opening up new scientific disciplines.”

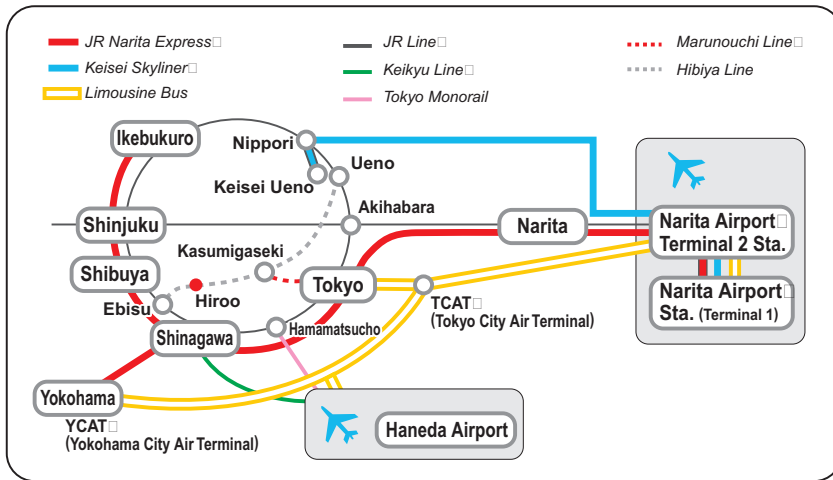
(from the *President's Statement*)

The Graduate University for Advanced Studies was thus established in October 1988 with seven institutes as parents. As of April 2007, the University has grown to have 18 parent institutes and 1082 Ph.D. students. The organization is composed of 6 schools that comprise 23 departments and a center.

In the Department of Statistical Science, research and educational activities focus on the effective use of data for the realization of rational inferences or predictions, in the same way as in the construction and confirmation of scientific hypotheses. The subject area covers the theory and application of statistical science, such as fundamental statistical theory, statistical methodologies, and the theory of prediction and control.

Since its establishment, 70 Doctors of Philosophy have been conferred by the Department. As of April 2007, the Department has 25 students (normally regulated to 14 students per year).

Location of the Institute



- Access to the ISM
- Tokyo Metro Hibiya Line, Hiroo Sta.
 - About 7 min on foot
 - Tokyo Metro Namboku Line, Azabu-jūban Sta.
 - Toei Ōedo Line, Azabu-jūban Sta.
 - About 20 min on foot

Inter-University Research Institute Corporation
Research Organization of Information and Systems
THE INSTITUTE OF STATISTICAL MATHEMATICS

including the

DEPARTMENT OF STATISTICAL SCIENCE,
SCHOOL OF MULTIDISCIPLINARY SCIENCES,
THE GRADUATE UNIVERSITY FOR ADVANCED STUDIES

4-6-7, Minami-Azabu, Minato-ku, Tokyo 106-8569, Japan

Phone: +81-3-3446-1501, Facsimile: +81-3-3443-3552

URL: <http://www.ism.ac.jp/>